



Naval Air Weapons Station China Lake Earthquake Recovery Industry Forum

18 December 2019

Overall Classification: UNCLASSIFIED

Earthquake Recovery Program



- **Design and Repair for Existing Facilities: \$533M**
- **FY20 Military Construction for Replacement \$1.2B for:**
 - Planning and Design
 - Hangar 3 Replacement, Apron, Taxiway & Utilities for RDTE
 - Air Operations Facility & Air Traffic Control Tower
 - Aircraft Parking Apron in Support of Hangar 2 Replacement
 - Michelson Mission Systems Integration Laboratory
 - Magazines and Inert Storage Facility
 - Community Support Facilities
- **FY21 Military Construction for Replacement: \$1.2B**

Targeting \$2.9B Planned for Facilities Design, Repair, and Construction

Earthquake Recovery Design & Acquisition Timelines

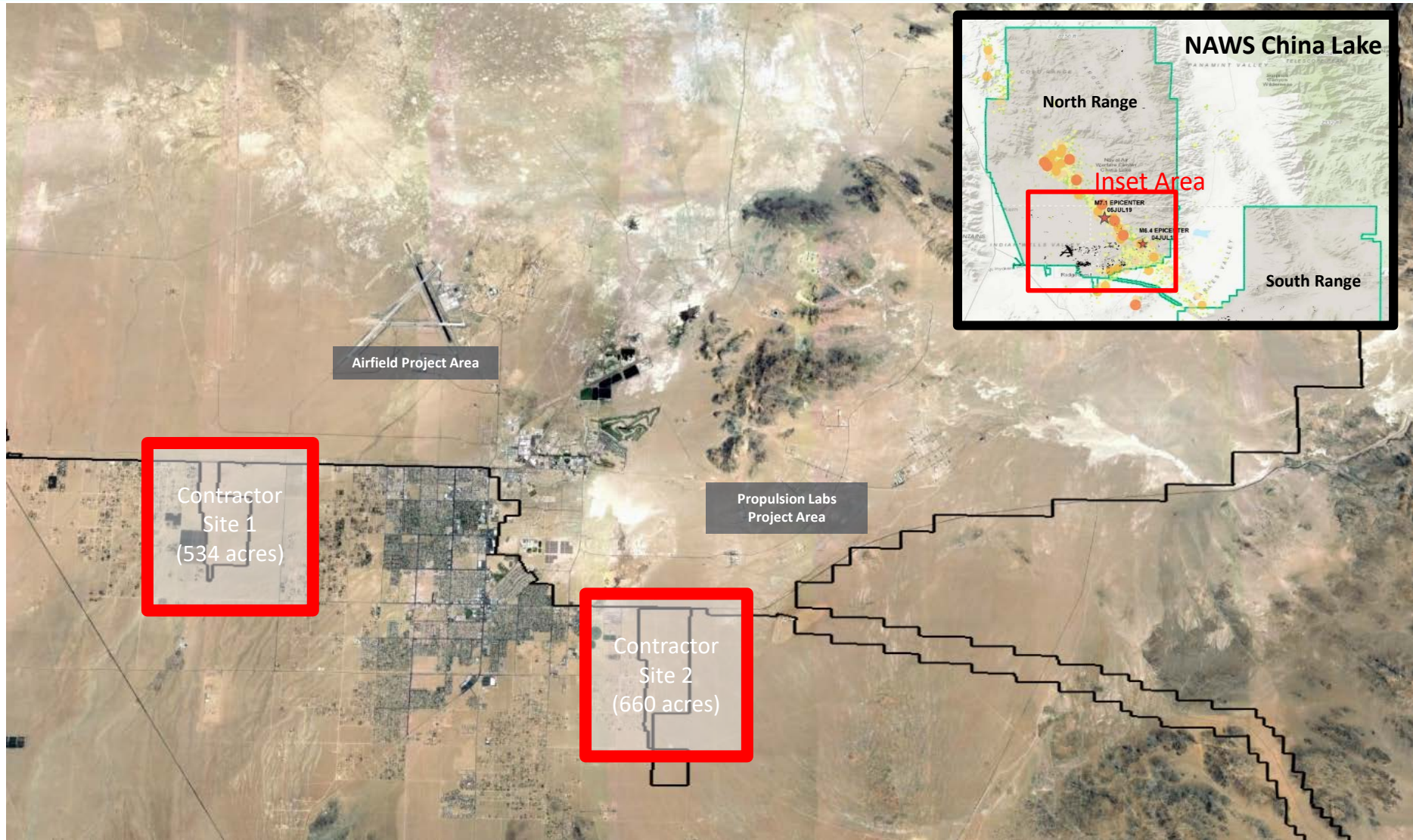


FY	P#	PROJECT TITLE	PLANNED CONTRACT VEHICLE	DESIGN STRATEGY	FY20												FY21											
					OCT	NOV	DEC	JAN	FEB	MAR	APR	MAY	JUN	JUL	AUG	SEP	OCT	NOV	DEC	JAN	FEB	MAR	APR	MAY	JUN	JUL	AUG	SEP
20	1900	Hangar 3 Replacement, Apron, Taxiway & Utilities for RDT&	MACC	DB	Pa	DESIGN TIMELINE						ACQ Min																
21	1901	Integration Lab	MACC	DB	Pa	DESIGN TIMELINE						ACQ Min			Award Option													
20	1902	Air Operations Facility and Air Traffic Control Tower	MACC	DB	Pa	DESIGN TIMELINE						ACQ Min																
20	1907	Aircraft Parking Apron in Support of Hangar 2 Replacement	MACC	DB	Pa	DESIGN TIMELINE						ACQ Min																
21	1908	Advanced Weapons Hangar	MACC	DB	Pa	DESIGN TIMELINE						ACQ Min			Award Option													
21	1914	Aircraft Rescue and Fire-fighting (ARFF) Station	MACC	DB	Pa	DESIGN TIMELINE						ACQ Min			Award Option													
			MACC	DB																								
20	1903	Michelson Mission Systems Integration Laboratory	MACC	DB	Pa	DESIGN TIMELINE						ACQ Min Timeline																
20	1910	Magazines and Inert Storage Facility	MACC	DB	Pa	DESIGN TIMELINE				ACQ Timeline																		
20	1916	Community Support Facilities	MACC	DB	Pa	DESIGN TIMELINE						ACQ Min Timeline																
21	1904	Michelson Lab Complex Consolidation	Stand Alone	DB						Pa	DESIGN TIMELINE																	
												ACQ Stand Alone Two Phase DB Timeline																
21	1911	Range Control Complex Consolidation	Stand Alone	DB						Pa	DESIGN TIMELINE																	
												ACQ Stand Alone Two Phase DB Timeline																
21	1918	Ordnance Test Support and Technical Services Lab	MACC	DB						Pa	DESIGN TIMELINE						ACQ Timeline											
21	1920	Warhead Casing Operations	MACC	DB						Pa	DESIGN TIMELINE						ACQ Timeline											
21	1924	Academic Training Building	MACC	DB						Pa	DESIGN TIMELINE						ACQ Timeline											
21	1917	Cast Propellant Mix Building	MACC	DBB		Pa	DESIGN TIMELINE												DDESB/NOSSA			ACQ Timeline						
21	1919	Radiographic Building	MACC	DBB		Pa	DESIGN TIMELINE												DDESB/NOSSA			ACQ Timeline						
21	1921	Motor Assembly Compound	MACC	DBB		Pa	DESIGN TIMELINE												DDESB/NOSSA			ACQ Timeline						
21	1922	Skytop Firing Bays	Stand Alone	DBB		Pa	DESIGN TIMELINE												DDESB/NOSSA			ACQ Single Phase DBB Timeline with Preliminary and Final Evaluations						

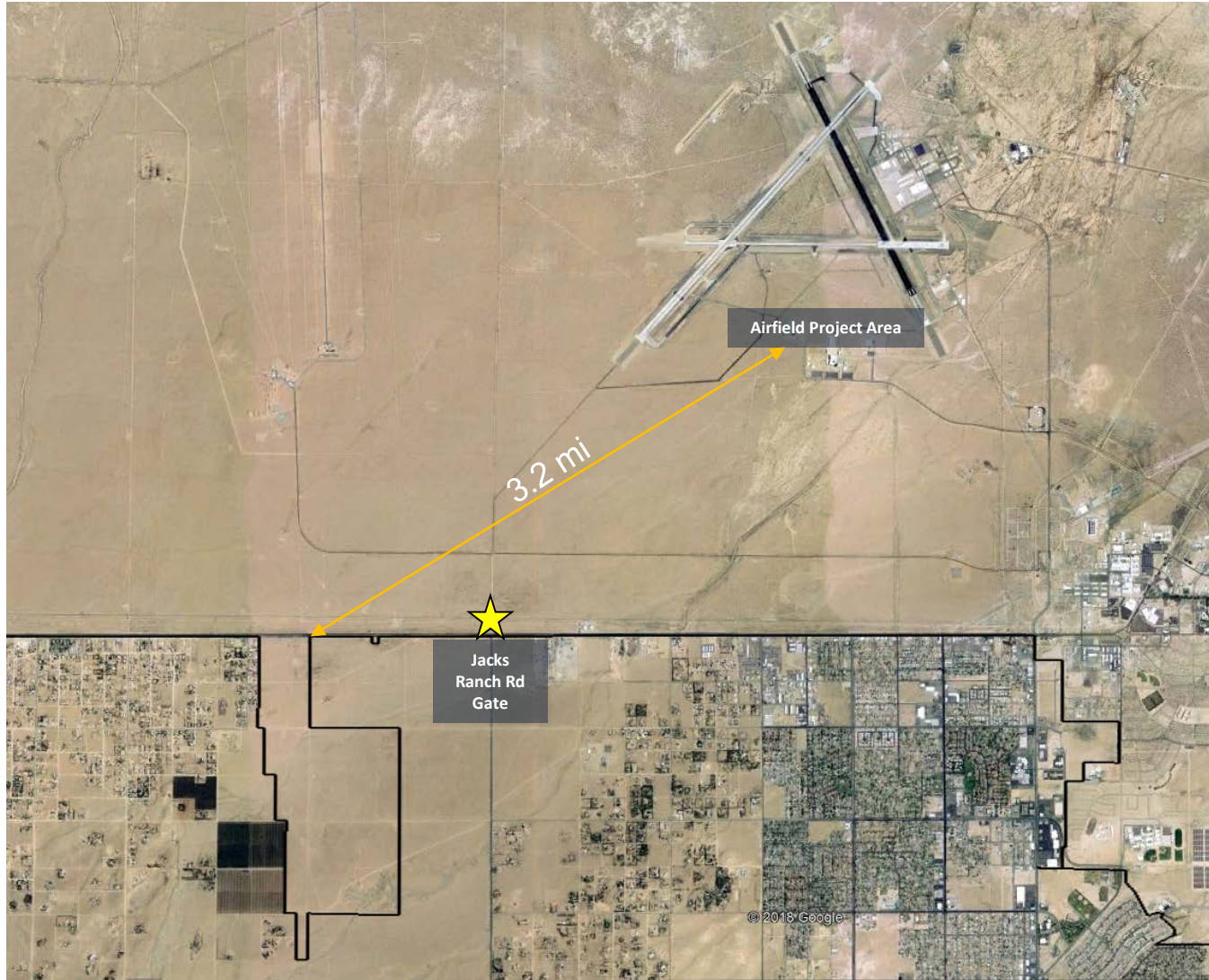
MACC: Multiple Award Construction Contract
 DB: Design Build
 DBB: Design Bid Build
 ACQ: Acquisition

Lots of effort in the next 21 months

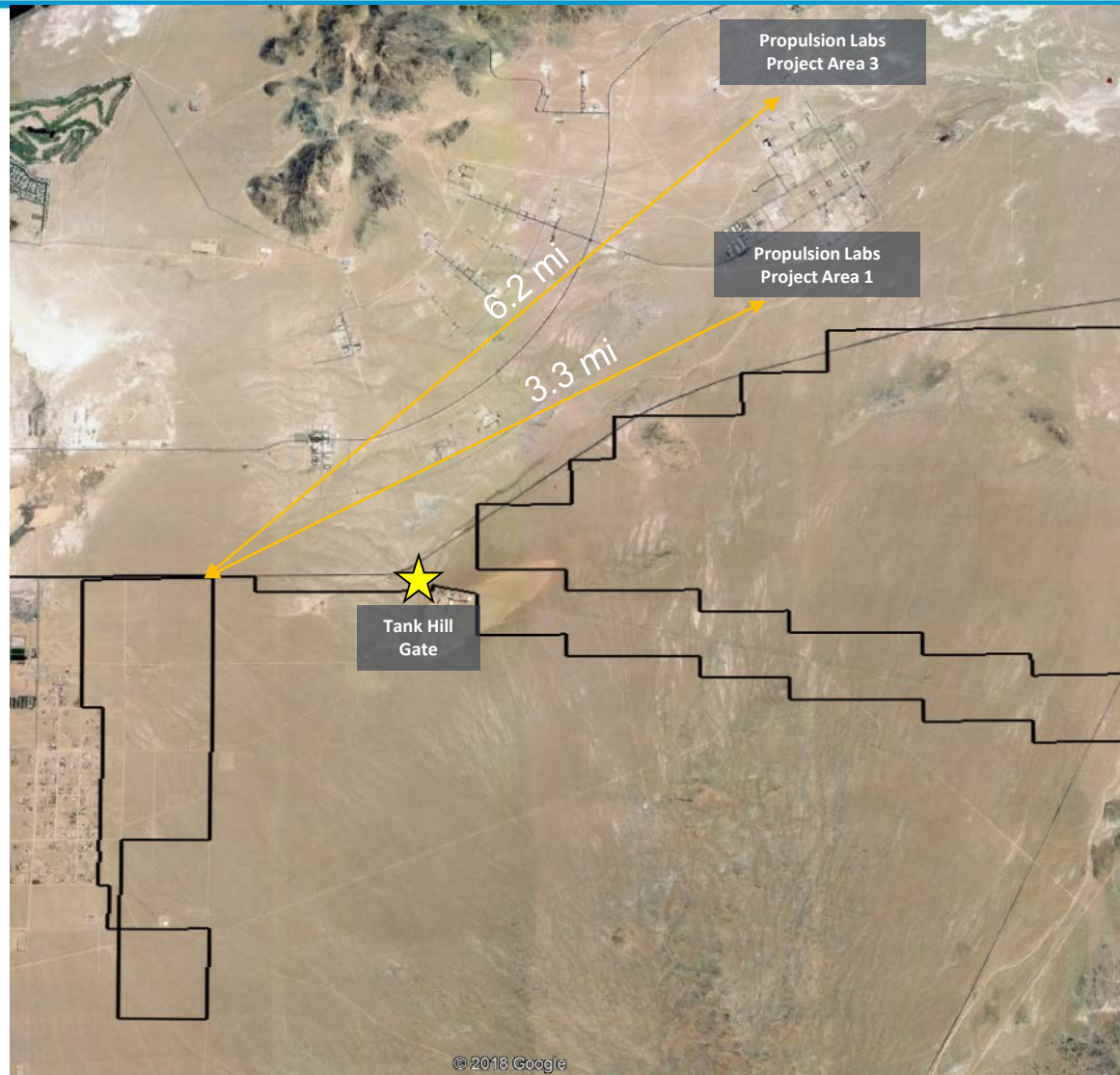
NAWS China Lake Contractor Camp Areas



Site 1 With Contractor Only Access Gate



Site 2 With Contractor Only Access Gate



How Can Industry Inform?



- **Potential barriers to bidding and/or execution**
 - **Rules/regulations that the government should be aware of and/or request a waiver**
- **Competition for limited resources (i.e. housing, personnel, etc.) in the vicinity of NAWSCCL that has been heightened due to earthquakes and other competing requirements (i.e. wild fires, strong economy, etc.) across the southwest**
- **Logistics/supplies required to execute a significant amount of construction at NAWSCCL in a relatively short period of time**
- **Approach to executing a major construction program safely and with high quality**
- **Partnering for a major construction effort at NAWSCCL**

Help Us Help You get NAWSCCL back to Fully Mission Capable

Questions and/or Comments You Have?



Required Infrastructure Upgrades at Gates



- **Road Repairs**
- **Guard House and facilities**
- **Vehicle Turnaround**
- **Jersey Barrier Placement**
- **Contracted Security Force**
- **Utilities**
- **Fencing**