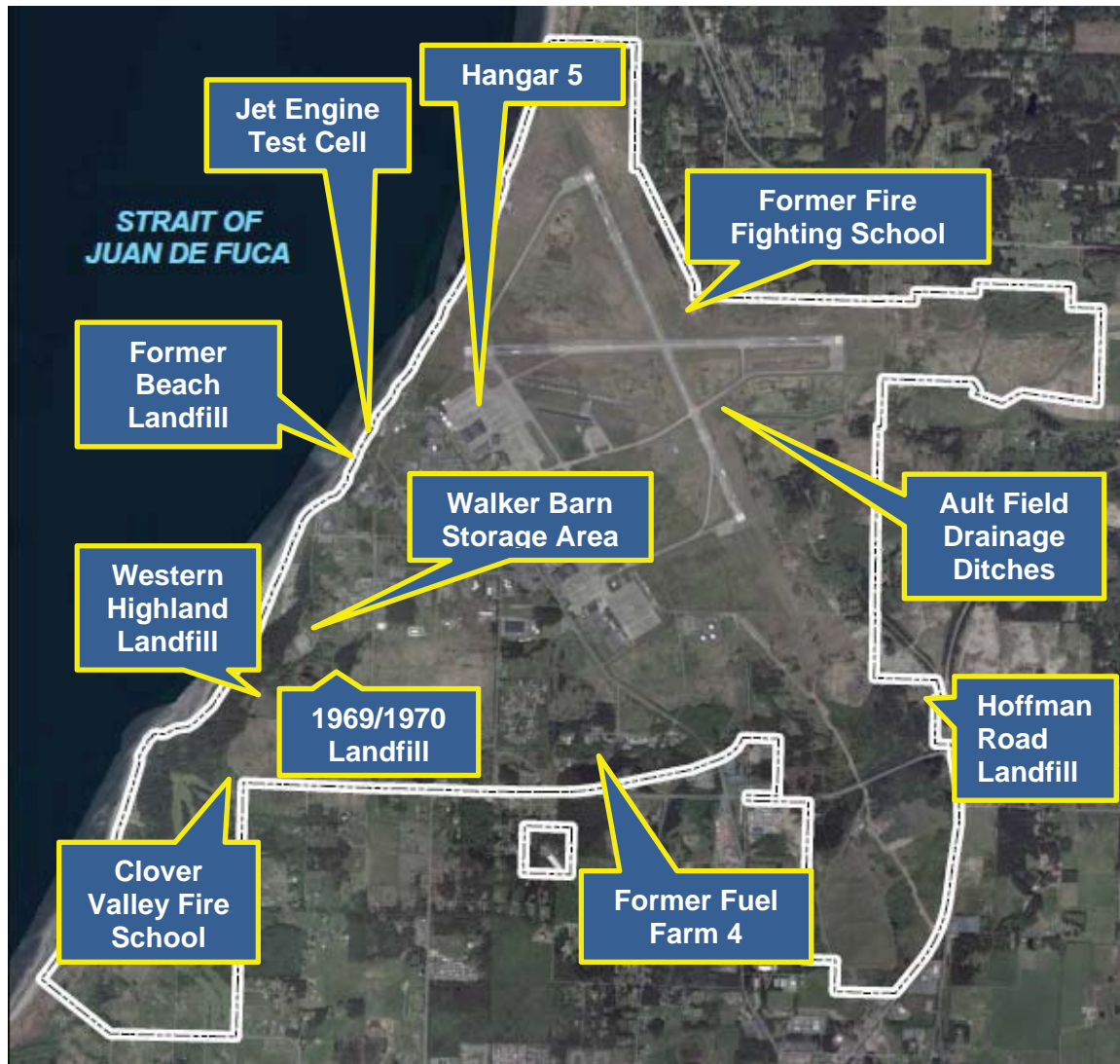


## NAS Whidbey Island Environmental Restoration Sites Location Overview



## NAS Whidbey Island, Ault Field – Sites under Long-term management



- CERCLA under Long-Term Management
  - *Former Beach Landfill*
  - *Jet Engine Test Cell*
  - *Ault Field Hangar 5*
  - *Ault Field Drainage Ditches*
  - *Hoffman Road Landfill*
  - *Western Highland Landfill*
  - *1969/1970 Landfill*
  - *Walker Barn Storage Area*
  - *Clover Valley Fire School*
- Petroleum Sites under Long-Term Management
  - *Former Fuel Farm 4*

## NAS Whidbey Island, Ault Field - Active Sites



- CERCLA under Investigation
  - Area 6 – PFAS (Preliminary Assessment)
  - Area 6 – 1,4-Dioxane (Feasibility Study)
  - Former Fire Fighting School – PFAS (Preliminary Assessment)
- CERCLA under Remedy
  - Area 6 – Trichloroethylene, Dichloroethene, Trichloroethane, Vinyl Chloride (Remedial Action Operation)
  - Former Fire Fighting School – Diesel, Gasoline, Manganese, Benzene, Vinyl Chloride (Remedial Action Operation)
- Petroleum Sites under Remedy
  - Former Fuel Farm 3 (Remedial Action Construction)
  - Ault Field A3 Underground Storage Tank (Remedial Action Construction)



## NAS Whidbey Island, Seaplane Base



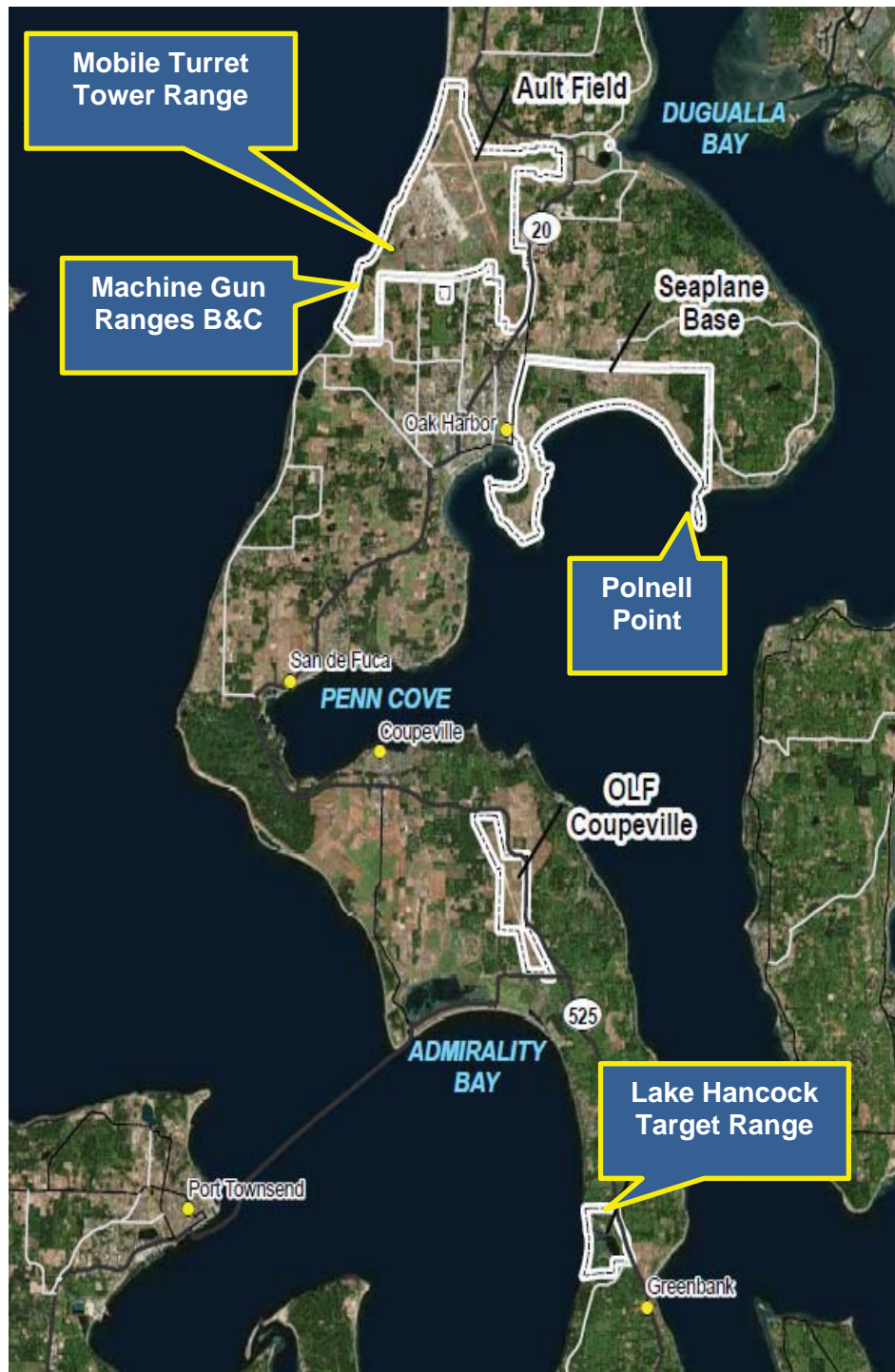
- Petroleum Sites under Remedial Action Operation
  - *Former Fuel Farm 1*
- CERCLA under Long-Term Management
  - *Seaplane Base (SPB) Landfill*
  - *Trichloroethylene (TCE) Tank*
  - *SPB Public Works Fueling Station*
- Petroleum Sites under Long-Term Management
  - *Former Fuel Farm 2*

## NAS Whidbey Island, Outlying Landing Field (OLF) Coupeville



- CERCLA under Investigation
  - OLF – PFAS (*Preliminary Assessment*)

## NAS Whidbey Island, Munitions Sites



- MRP Site under investigation
  - *Polnell Point (Remedial Investigation)*
- MRP Site under Remedy
  - *Lake Hancock Target Range (Remedial Action Construction)*
- MRP Sites under long-term management
  - *Machine Gun Ranges B&C*
  - *Former Mobile Turret Tower Range*