



Naval Facilities Engineering Command, Pacific
 258 Makalapa Drive, Suite 100
 Pearl Harbor, Hawaii 96860-3134

MILITARY RELOCATION TO GUAM AND CNMI PROGRAMMATIC AGREEMENT (PA) MEMO # 1

Project: P-109 VMM Hangar #1	Date: June 13, 2013
Project Location: Andersen Air Force Base	Prepared By: EV23
PROJECT DESCRIPTION:	
<p>This project proposes the construction of an aircraft maintenance hangar at Andersen Air Force Base on the island of Guam.</p> <p>P-109 VMM Hangar #1 was identified in the Final EIS (FEIS) for the military relocation to Guam and CNMI and Appendix E of the Military Relocation Programmatic Agreement (PA). In accordance with Stipulation IV.E.2.a. of the PA, this memo presents information to allow interested members of the public to provide comments on the identification and evaluation of historic properties in the proposed project area.</p> <p>Project works include the construction of an aviation maintenance hangar with high bay spaces, crew and equipment spaces, and administrative spaces. Building electrical systems include power, emergency power, lighting, telecommunications, intercommunications/public address, grounding, lightning protection and electronic security systems. Building mechanical systems include a fire suppression system, plumbing, heating and air conditioning and compressed air. The building will be constructed with features appropriate to Guam earthquake and environmental conditions.</p> <p>Site preparation will consist of clearing and grubbing, grading, disposal and in-fills, ground improvements and preparation for construction. The effort may also require seismic fault, geotechnical/geophysical and topographic surveys and munitions explosive removal. Paving and site improvements include roadway improvements, parking for approximately 105 vehicles, landscaping and other improvements. The road improvements include an appropriate roadway storm-water runoff system. The ground improvements will include a drainage system consistent with the USMC North Ramp Area Development Plan and the storm-water pollution prevention plan. Electrical utilities includes networks of primary and secondary distribution installed in ducts and manholes, transformer/substation and street and outside area lighting with associated service equipment. The communication infrastructure will include ducts and manholes for future and current communication cabling and fiber optic lines requirements and includes the communication cabling and fiber optic lines for current requirements.</p>	

- 1 This PA Memo is required by Stipulation IV.E.2.a. of the PA as a means for interested members of the public to provide comments on the identification and evaluation of historic properties. Stipulation IV.E.1.b. of the PA requires the DoD to take into account comments received within 45 days of the date of the delivery of this PA memo to the SHPO and public notification via the CRI website.

Andersen Air Force Base is one of the largest airfields in the US Air Force. It covers 6,275 ha (15,500 acres) and occupies a mostly flat, uplifted limestone plateau in the northern portion of the island of Guam. The Main Operations area in the eastern third of the base includes the main active airfield and an array of operations, maintenance and community support facilities, most of which are located along the South Ramp. The North Ramp area includes operations of the Navy's HSC-25, munitions storage in the former Strategic Command storage area, and parking apron space for contingency operations. The central third of the base is a Munitions Storage Area (MSA). The western third is Northwest Field, a WWII-era airfield that is currently used for fixed-wing aircraft, helicopter training, and various field exercises and bivouacs.

The total APE for P-109 is 45 acres, all of which are included in the same footprint and thus, consultation for project P-100 (see Figure 1).

IDENTIFICATION OF HISTORIC PROPERTIES:

Scope of DoD Identification Efforts

In planning for the Undertaking, the Department of Defense (DoD) has conducted extensive archaeological and architectural surveys and evaluations, and, in consultation with the Guam State Historic Preservation Officer (SHPO), Advisory Council on Historic Preservation (ACHP), National Park Service (NPS) and some Concurring Parties, we have applied the results to the siting/lay down of individual projects to avoid and minimize effects to historic properties. DoD has provided documentation of these efforts to the Signatories and Invited Signatories via Appendices D and E of the Programmatic Agreement (PA).

DoD surveys and evaluations have focused on project-specific APEs, defined consistent with 36 CFR §800.16(d) to include those portions of the island of Guam and Tinian subject to direct and indirect effects of projects included in the Undertaking, based on the Final Environmental Impact Statement (FEIS).

In addition to the archaeological and architectural surveys and evaluations, DoD has completed extensive archival research and oral history studies and interviews to identify traditional cultural properties, places, sacred sites, and culturally important natural resources such as the *nunu*, *da'ok*, *dukduk*, and *ifit* trees, and medicinal plants.

More specifically, the entirety of the P-109 project area falls within the P-100 project footprint for which consultation has been completed. The entirety of the P-109 project area was included in one or more of the following studies of cultural and/or historic resources conducted prior to, or in support of the Environmental Impact Statement (EIS) by the DoD beginning in 2007.

Hunter-Anderson, R., and D. Moore

2003 Cultural Resources Snake Barrier Concept, Andersen Air Force Base, Guam. Prepared for Innovative Technical Solutions, Inc. (ITSI), Walnut Creek, California.

2 This PA Memo is required by Stipulation IV.E.2.a. of the PA as a means for interested members of the public to provide comments on the identification and evaluation of historic properties. Stipulation IV.E.1.b. of the PA requires the DoD to take into account comments received within 45 days of the date of the delivery of this PA memo to the SHPO and public notification via the CRI website.

NAVFAC Pacific

2009 Archaeological Surveys and Cultural Resources Studies on Guam and the Commonwealth of the Northern Mariana Islands in Support of the Joint Guam Build-Up Environmental Impact Statement, Volume I: Guam. Prepared for Department of the Navy, Naval Facilities Engineering Command, Pacific, Pearl Harbor, Hawaii under Contract N62742-06-D-1870, Task Order 07 to TEC, Inc.

2010a Cultural Resource Investigations Conducted in the Territory of Guam Supporting the Joint Guam Build-Up Environmental Impact Statement: Draft Archaeological Surveys on Guam 2009. Prepared for Department of the Navy, Naval Facilities Engineering Command, Pacific, Pearl Harbor, Hawaii under Contract N62742-06-D-1870, Task Order 07 to TEC, Inc.

2010b Cultural Resource Investigations Conducted in the Territory of Guam Supporting the Joint Guam Build-Up Environmental Impact Statement: Draft Archaeological Surveys on Guam 2010. Prepared for Department of the Navy, Naval Facilities Engineering Command, Pacific, Pearl Harbor, Hawaii under Contract N62742-06-D-1870, Task Order 07 to TEC, Inc.

2010c Final Archaeological Surveys and Cultural Resources Studies Conducted in 2007 on the Island of Guam in Support of the Joint Guam Build-Up Environmental Impact Statement; Volume I: Narrative. Prepared for Department of the Navy, Naval Facilities Engineering Command, Pacific, Pearl Harbor, Hawaii under Contract N62742-06-D-1870, Task Order 10 to TEC, Inc.

2011 Final Cultural Resources Investigations Conducted in the Territory of Guam Supporting the Joint Guam Build-Up Environmental Impact Statement: Archaeological Surveys on Guam 2009 at Proposed Utility Sites, Harmon Annex, and Andersen Air Force Base. Prepared for Department of the Navy, Naval Facilities Engineering Command, Pacific, Pearl Harbor, Hawaii under Contract N62742-06-D-1870, Task Order 10 to TEC, Inc.

2012 Historic American Engineering Record, Andersen Air Force Base North Field, HAER No. GU-9. Prepared for Department of the Navy, Naval Facilities Engineering Command, Pacific, Pearl Harbor, Hawaii under Contract N62742-09-D-1960, Task Order 13 to SEARCH, Inc.

Results of the study indicate that a portion of one historic property is located within the P-109 project area.

Historic Property 1 is a WW II-era runway complex, which while retaining some of its original layout, is now essentially a Cold War-era airfield with the 1940s elements adapted for larger and heavier aircraft (B-36, B-47 and B-52).

PRELIMINARY DoD DETERMINATION OF ELIGIBILITY:




Pending input from consulting parties and the public, the DoD's determination is that a portion of one site eligible for listing in the National Register of Historic Places is located within the proposed project area.

- 3** This PA Memo is required by Stipulation IV.E.2.a. of the PA as a means for interested members of the public to provide comments on the identification and evaluation of historic properties. Stipulation IV.E.1.b. of the PA requires the DoD to take into account comments received within 45 days of the date of the delivery of this PA memo to the SHPO and public notification via the CRI website.

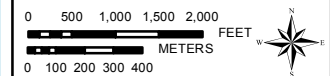
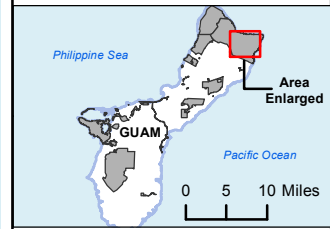
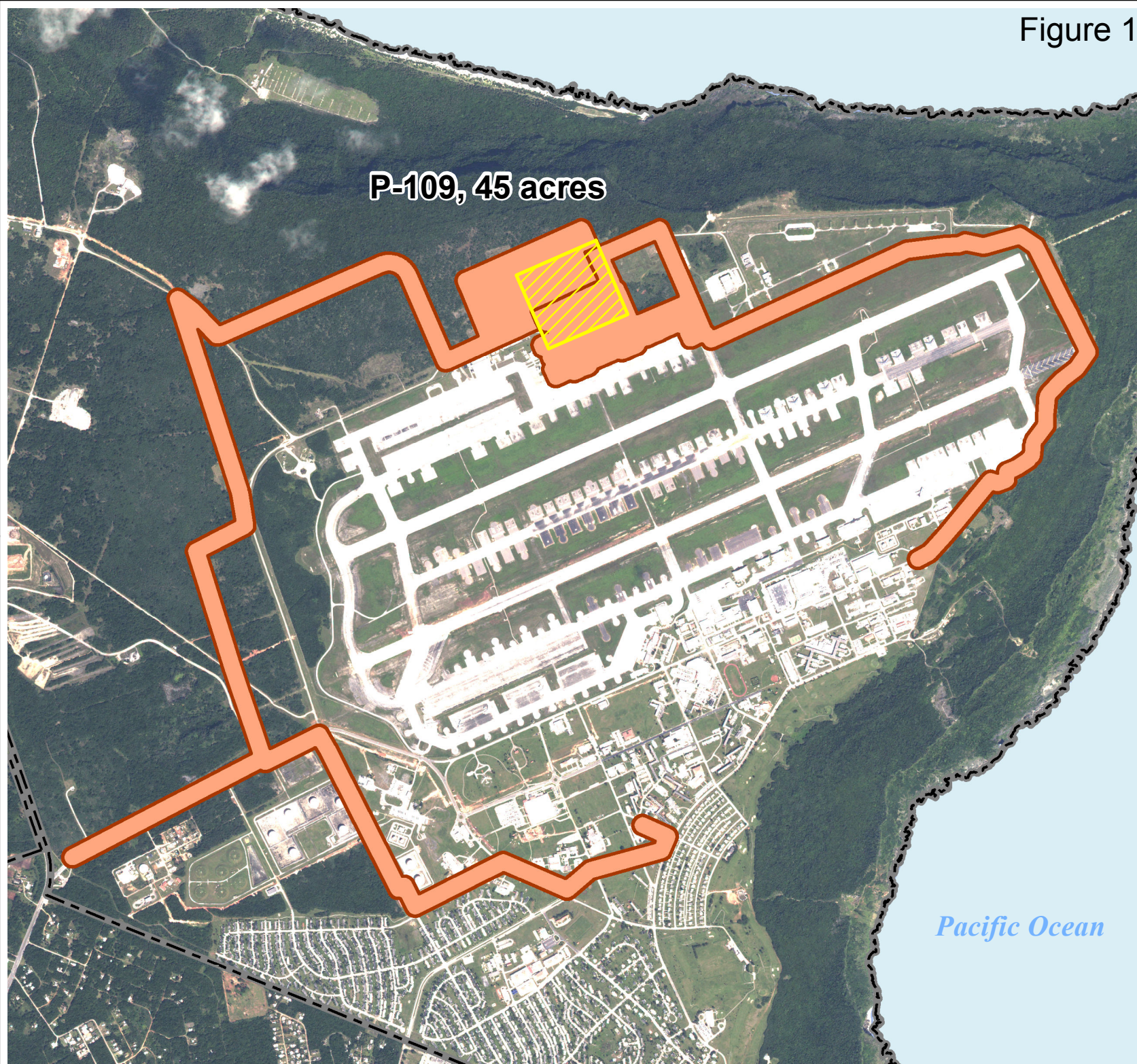
Figure 1

**P-109 Project
Boundary vs.
P100/P101 PA
Memo Boundary**

Legend

-  P-109 Project Area-
North Ramp Hanger
Construction Final
-  P-100 / P-101 Project
Boundary PA Memo
-  Military Installation

P-109, 45 acres



DATE: 13 Jun 2013

Date: Thursday, June 13, 2013
Path: C:\GPMO Program Support\Aaron_MXD\4. AAFB2. Environmental\2. Cultural Resources\AAAFB - P109 vs P100_P101 NewAcreege_PA.mxd