



Naval Facilities Engineering Command, Pacific  
258 Makalapa Drive, Suite 100  
Pearl Harbor, Hawaii 96860-3134

## MILITARY RELOCATION TO GUAM AND CNMI PROGRAMMATIC AGREEMENT (PA) MEMO # 1

<b>Project:</b> J-200 North Ramp Utilities II	<b>Date:</b> June 13, 2013
<b>Project Location:</b> Andersen Air Force Base	<b>Prepared By:</b> EV23
<b>PROJECT DESCRIPTION:</b>	
<p>This project proposes construction of infrastructure, such as asphalt concrete roadways, concrete sidewalks, electrical and communication duct banks, water lines, fire hydrants, sewer lines and drainage swales, most of which were originally included in project P-100 (North Ramp Utilities, Phase I). Additionally, paving and site improvements will consist of flight line security fencing, access gates, turnstiles, roadways, driveways, parking areas and other hardscape, sidewalks and ramps, retaining walls and concrete masonry structures.</p> <p>North Ramp Utilities II is a project that was identified after preparation of the Final EIS (FEIS) for the military relocation to Guam and CNMI and Appendix E of the PA. In accordance with Stipulation I.E. of the PA, it is a new project associated with the Guam and Commonwealth of Northern Mariana Islands (CNMI) Military Relocation (the Undertaking). Accordingly, this memo presents information to allow interested members of the public to provide comments on the identification and evaluation of historic properties in the proposed project area.</p> <p>The effort may also require munitions explosive removal, seismic fault, geotechnical/geophysical and/or topographic surveys in preparation for J-200 improvements and future vertical construction projects within the same area of potential effect (Figure 1).</p> <p>Project works include clearing and grubbing, earthwork (cut and fill to grade), temporary erosion and sediment control, and landscaping.</p> <p>Andersen Air Force Base is one the largest airfields in the US Air Force. It covers 6,275 ha (15,500 acres) and occupies a mostly flat, uplifted limestone plateau in the northern portion of the island of Guam. The Main Operations area in the eastern third of the base includes the main active airfield and an array of operations, maintenance and community support facilities, most of which are located along the South Ramp. The North Ramp area includes operations of the Navy's HSC-25, munitions storage in the former Strategic Command storage area, and parking apron space for contingency operations. The central third of the base is a Munitions Storage Area (MSA). The</p>	

- 1 This PA Memo is required by Stipulation IV.E.2.a. of the PA as a means for interested members of the public to provide comments on the identification and evaluation of historic properties. Stipulation IV.E.1.b. of the PA requires the DoD to take into account comments received within 45 days of the date of the delivery of this PA memo to the SHPO and public notification via the CRI website.

western third is Northwest Field, a WWII-era airfield that is currently used for fixed-wing aircraft, helicopter training, and various field exercises and bivouacs.

The total APE for J-200 is 271.67 acres, however, all but 25 of these acres were included in the same footprint and consultation for project P-100 (Figure 1).

## **IDENTIFICATION OF HISTORIC PROPERTIES:**

### **Scope of DoD Identification Efforts**

In planning for the Undertaking, the Department of Defense (DoD) has conducted extensive archaeological and architectural surveys and evaluations, and, in consultation with the Guam State Historic Preservation Officer (SHPO), Advisory Council on Historic Preservation (ACHP), National Park Service (NPS) and some Concurring Parties, we have applied the results to the siting/lay down of individual projects to avoid and minimize effects to historic properties. DoD has provided documentation of these efforts to the Signatories and Invited Signatories via Appendices D and E of the Programmatic Agreement (PA).

DoD surveys and evaluations have focused on project-specific APEs, defined consistent with 36 CFR §800.16(d) to include those portions of the island of Guam and Tinian subject to direct and indirect effects of projects included in the Undertaking, based on the Final Environmental Impact Statement (FEIS).

In addition to the archaeological and architectural surveys and evaluations, DoD has completed extensive archival research and oral history studies and interviews to identify traditional cultural properties, places, sacred sites, and culturally important natural resources such as the *nunu*, *da'ok*, *dukduk*, and *ifit* trees, and medicinal plants.

More specifically, the majority of the J-200 project area falls within the P-100 project footprint for which consultation has been completed. The entirety of the J-200 project area was included in one or more of the following studies of cultural and/or historic resources conducted prior to, or in support of the Environmental Impact Statement (EIS) by the DoD beginning in 2007.

Hunter-Anderson, R., and D. Moore

2003 Cultural Resources Snake Barrier Concept, Andersen Air Force Base, Guam. Prepared for Innovative Technical Solutions, Inc. (ITSI), Walnut Creek, California.

NAVFAC Pacific

2009 Archaeological Surveys and Cultural Resources Studies on Guam and the Commonwealth of the Northern Mariana Islands in Support of the Joint Guam Build-Up Environmental Impact Statement, Volume I: Guam. Prepared for Department of the Navy, Naval Facilities Engineering Command, Pacific, Pearl Harbor, Hawaii under Contract N62742-06-D-1870, Task Order 07 to TEC, Inc.

- 2 This PA Memo is required by Stipulation IV.E.2.a. of the PA as a means for interested members of the public to provide comments on the identification and evaluation of historic properties. Stipulation IV.E.1.b. of the PA requires the DoD to take into account comments received within 45 days of the date of the delivery of this PA memo to the SHPO and public notification via the CRI website.

2010a Cultural Resource Investigations Conducted in the Territory of Guam Supporting the Joint Guam Build-Up Environmental Impact Statement: Draft Archaeological Surveys on Guam 2009. Prepared for Department of the Navy, Naval Facilities Engineering Command, Pacific, Pearl Harbor, Hawaii under Contract N62742-06-D-1870, Task Order 07 to TEC, Inc.

2010b Cultural Resource Investigations Conducted in the Territory of Guam Supporting the Joint Guam Build-Up Environmental Impact Statement: Draft Archaeological Surveys on Guam 2010. Prepared for Department of the Navy, Naval Facilities Engineering Command, Pacific, Pearl Harbor, Hawaii under Contract N62742-06-D-1870, Task Order 07 to TEC, Inc.

2010c Final Archaeological Surveys and Cultural Resources Studies Conducted in 2007 on the Island of Guam in Support of the Joint Guam Build-Up Environmental Impact Statement; Volume I: Narrative. Prepared for Department of the Navy, Naval Facilities Engineering Command, Pacific, Pearl Harbor, Hawaii under Contract N62742-06-D-1870, Task Order 10 to TEC, Inc.

2011 Final Cultural Resources Investigations Conducted in the Territory of Guam Supporting the Joint Guam Build-Up Environmental Impact Statement: Archaeological Surveys on Guam 2009 at Proposed Utility Sites, Harmon Annex, and Andersen Air Force Base. Prepared for Department of the Navy, Naval Facilities Engineering Command, Pacific, Pearl Harbor, Hawaii under Contract N62742-06-D-1870, Task Order 10 to TEC, Inc.

2012 Historic American Engineering Record, Andersen Air Force Base North Field, HAER No. GU-9. Prepared for Department of the Navy, Naval Facilities Engineering Command, Pacific, Pearl Harbor, Hawaii under Contract N62742-09-D-1960, Task Order 13 to SEARCH, Inc.

Results of the study indicate that a portion of one historic property is located within the J-200 project area.

Historic Property 1 is a WW II-era runway complex, which while retaining some of its original layout, is now essentially a Cold War-era airfield with the 1940s elements adapted for larger and heavier aircraft (B-36, B-47 and B-52).

**PRELIMINARY DoD DETERMINATION OF ELIGIBILITY:**


Pending input from consulting parties and the public, the DoD's determination is that a portion of one site eligible for listing in the National Register of Historic Places is located within the proposed project area.

- 
- 3 This PA Memo is required by Stipulation IV.E.2.a. of the PA as a means for interested members of the public to provide comments on the identification and evaluation of historic properties. Stipulation IV.E.1.b. of the PA requires the DoD to take into account comments received within 45 days of the date of the delivery of this PA memo to the SHPO and public notification via the CRI website.

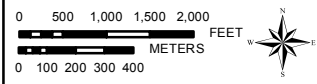
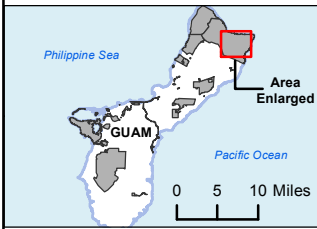
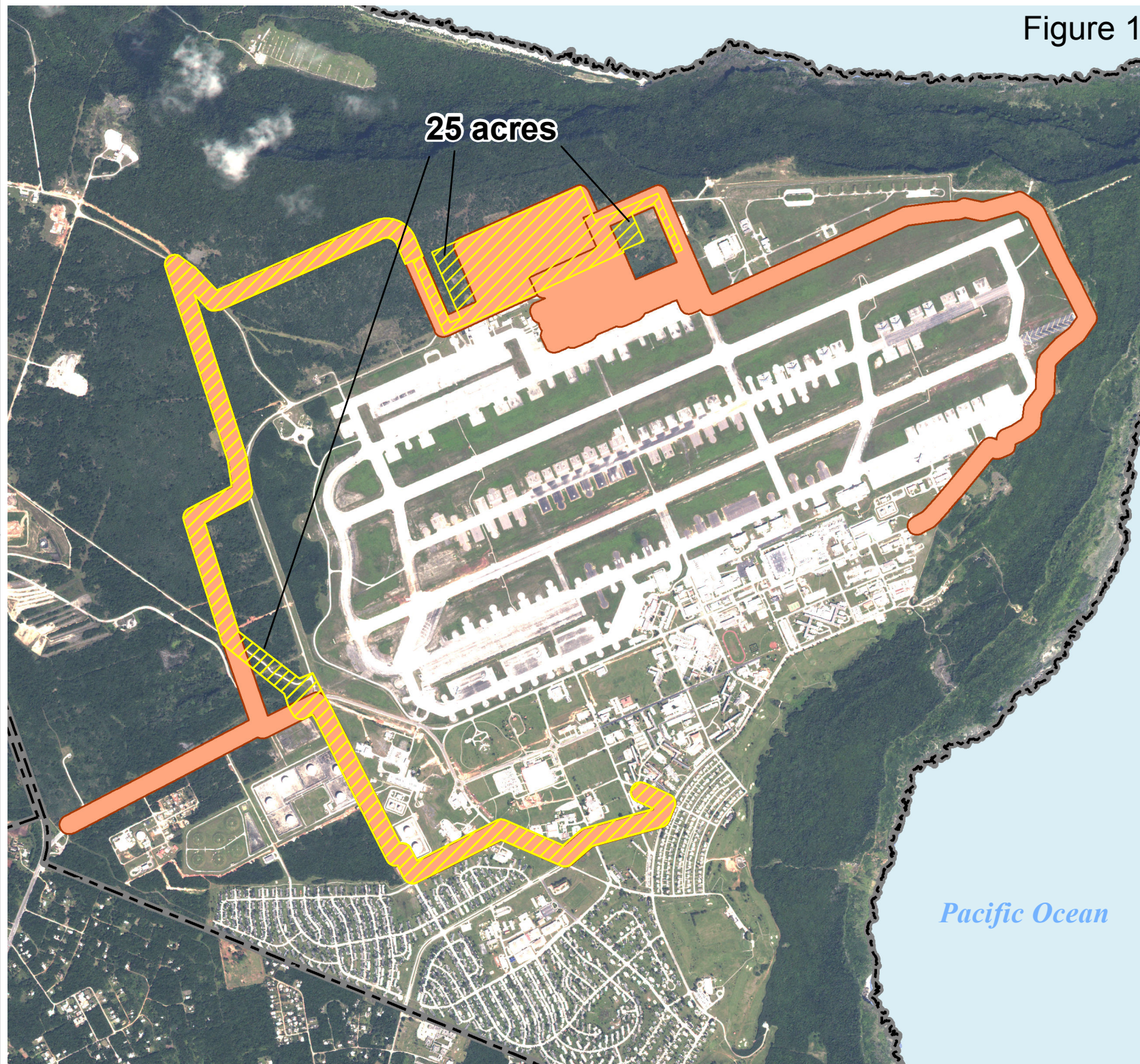
Figure 1

**J-200 Project  
Boundary vs.  
P100/P101 PA  
Memo Boundary**

**Legend**

-  J-200 Project Area-  
USI 1391
-  Construction Final  
P-100 / P-101 Project  
Boundary PA Memo
-  Military Installation

25 acres



DATE: 13 Jun 2013