



Naval Facilities Engineering Command Marianas  
 PSC 455 Box 195  
 FPO AP 96540-2937

**MILITARY RELOCATION TO GUAM AND CNMI  
 PROGRAMMATIC AGREEMENT (PA) MEMO #1**

<b>Project:</b> Establishment of Native Plant Nurseries	<b>Date:</b> October 30, 2015
<b>Project Location:</b> NCTS Finegayan	<b>Prepared By:</b> NAVFAC Marianas

**PROJECT SUMMARY**

In the 2014 Biological Assessment (BA), the Department of the Navy (DON) included a conservation measure to enhance native limestone forest by collecting seed, salvaging plant material, propagating, and planting dominant and rare species that are characteristic of native limestone forest habitats. The purpose of this project is to establish native plant nurseries to support the BA/Biological Opinion (BA/BO) conservation measures. The project will consist of a long-term nursery location and up to five temporary locations to facilitate easier access to planting in the forest enhancement areas.

The BO for the relocation of U.S. Marines to Guam (2015-F-0025), the Memorandum of Agreement for the Conservation of Guam Micronesian Kingfisher Recovery Habitat in Northern Guam (May 2015) and the Final Integrated Natural Resources Management Plan for Joint Region Marianas of December 2013 all discuss the need to enhance native limestone forest to improve habitat quality for threatened and endangered species and to prevent the need to list additional species as threatened or endangered. This project will provide native plant material for use in limestone forest enhancement projects in northern Guam.

The BA for the relocation of U.S. marines to Guam notes that the conservation measures identified by the DON are intended to support reintroduction of native endangered or threatened species on department of defense (DOD) lands on Guam consistent with species recovery plans.

This PA Memo serves as an addendum to the 2011 Programmatic Agreement among the Department of Defense, the Advisory Council on Historic Preservation, the Guam State Historic Preservation Officer, and the Commonwealth of the Northern Mariana Islands State Historic Preservation Officer Regarding the Relocation to the Islands of Guam and Tinian (the Undertaking). Accordingly, this memo presents information to allow interested members of the public to provide comments on the DoD’s identification and evaluation of historic properties within

**1** The posting of this PA Memo on the Cultural Resources Information (CRI) website is required by Stipulation IV.E.2. of the 2011 Military Relocation PA as a means for interested members of the public to provide comments on the identification and evaluation of historic properties. Confidentiality requirements under the Archaeological Resources Protection Act (ARPA) and National Historic Preservation Act (NHPA) prohibit federal agencies from publicly disclosing the exact nature and location of historic properties and other types of historic properties such as traditional cultural properties (TCPs).

the project's Area of Potential Effects (APE), as well as the DoD's determination of effect.

### **PROJECT LOCATION**

Five potential nursery sites have been identified within the Naval Base Guam Telecommunications Site (NBG TS) and one potential site has been identified within the forest enhancement area at north Finegayan, adjacent to NBG TS. NBG TS is located on the northwestern side of Guam and totals approximately 3,000 acres. It will be the site for the Marine Corps Activity Guam Main Cantonment. The total potential APE being considered is 50.0 acres, with 33.9 acres in the Long Term areas (and will include a trailer or other similar shelter), and 16.1 acres in the Short Term areas. The total area for the final nursery project will not exceed 10 acres. The proposed/potential nursery parcels were carefully selected to avoid disturbance of historic properties. The attached map (Figure 1) shows the potential locations for the nursery sites. Although only 10 acres are needed, the additional space was mapped out just in case there are other surface hindrances such as rock outcrops, large trees, or crevasses that might inhibit full nursery utilization.

### **PROJECT DESCRIPTION**

The proposed nursery project will consist of one long term facility and up to four temporary sites. All components of the nursery project will be completely removed at the conclusion of the project. The anticipated timeline for the nursery project is 12 years. The long term facility will allow space for a work trailer, or similar structure, that will provide office spaces for the nursery staff and protection to the plants during storms. The trailer or similar structure will be equipped with electrical hook ups, water connections, telecommunication (computers and telephone), a refrigerator, and air conditioning. The temporary nurseries will be for plant storage and long-term maintenance of plant material. The temporary nursery set-up may include galvanized steel posts, shade cloths, and cinderblocks, or similar material and will not have electrical or water hook-ups. Both types of nurseries will include hazardous waste storage for pesticides. Port-a-potties may also be on site.

Project site work may include some vegetation clearing including shrubs and coconut trees and grading to create a level area. The long term nursery may require digging in previously disturbed areas to tie into existing electrical and water lines. Utility trenching, no more than 4 feet deep, will only occur in the Long Term nursery areas foot prints which are already shown to have no historic properties, having been fully graded for housing (northern long term plot) and sports field complex (southern long term plot). Utilities are already present within these long term plots and can be accessed without going outside the plots. Additionally, any concrete posts needed will be fully within the proposed nursery foot prints, and no more than 2 feet deep. A backflow preventer and meter will need to be installed if the contractor ties into the water line and a meter will be needed for electrical. No permanent structures will be associated with this project.

- 2 The posting of this PA Memo on the Cultural Resources Information (CRI) website is required by Stipulation IV.E.2. of the 2011 Military Relocation PA as a means for interested members of the public to provide comments on the identification and evaluation of historic properties. Confidentiality requirements under the Archaeological Resources Protection Act (ARPA) and National Historic Preservation Act (NHPA) prohibit federal agencies from publicly disclosing the exact nature and location of historic properties and other types of historic properties such as traditional cultural properties (TCPs).

## IDENTIFICATION OF HISTORIC PROPERTIES

### Scope of DoD Identification Efforts

The DoD has required archaeological surveys and identification of historic properties throughout the facilities involved over the years. In consultation with the Guam SHPO, Advisory Council on Historic Preservation (ACHP), National Park Service (NPS) and Concurring Parties to the 2011 Programmatic Agreement (2011 PA), the DoD has applied the results of those identification efforts to the siting/lay down of individual projects to avoid and minimize effects to historic properties to the extent practical. The site selection for the potential nursery locations took this into consideration, avoiding all known historic properties. Previous studies that pertain to the nursery locations are noted below.

The 1987 study (Kurashina et.al.) reported no historic properties in the current project area for the nurseries. A study (Athens 2009) indicated historic properties, but none in the current project area. An intensive 2007 archaeological survey that covered this area did not locate any historic properties where the nurseries are proposed (Welch 2010).

Athens, J.S.

2009 Final Archaeological Surveys and Cultural Resources Studies on Guam and the Commonwealth of the Northern Mariana Islands in Support of the Joint Guam Build-Up Environmental Impact Statement Volume I: Guam. Prepared by International Archaeological Research Institute, Inc. Honolulu, HI.

Kurashina, Hiro, Thomas McGrath, and Harley Manner

1987 Archaeological Survey of Areas 1, 2, 1A, and 2A at Northwest Field, Andersen Air Force Base and Naval Communication Area Master Station Western Pacific, Finegayan, Guam, Mariana Islands. Prepared for Department of the Navy, Naval Facilities Engineering Command, Pacific, Pearl Harbor. University of Guam, Mangilao, Guam, and Bernice P. Bishop Museum, Honolulu.

Welch, David J.

2010 Archaeological Surveys and Cultural Resources Studies on the Island of Guam in Support of the Joint Guam Build-Up Environmental Impact Statement VOLUME I: NARRATIVE. Contract N62742-06-D-1870, Contract Task Order No. 0010. Prepared for Department of the Navy, Naval Facilities Engineering Command, Pacific Pearl Harbor, Hawai'i.

### DETERMINATION OF ELIGIBILITY:

Pending input from consulting parties and the public, the DoD has determined there are no historic properties within the Native Plant Nursery APE.

- 3 The posting of this PA Memo on the Cultural Resources Information (CRI) website is required by Stipulation IV.E.2. of the 2011 Military Relocation PA as a means for interested members of the public to provide comments on the identification and evaluation of historic properties. Confidentiality requirements under the Archaeological Resources Protection Act (ARPA) and National Historic Preservation Act (NHPA) prohibit federal agencies from publicly disclosing the exact nature and location of historic properties and other types of historic properties such as traditional cultural properties (TCPs).

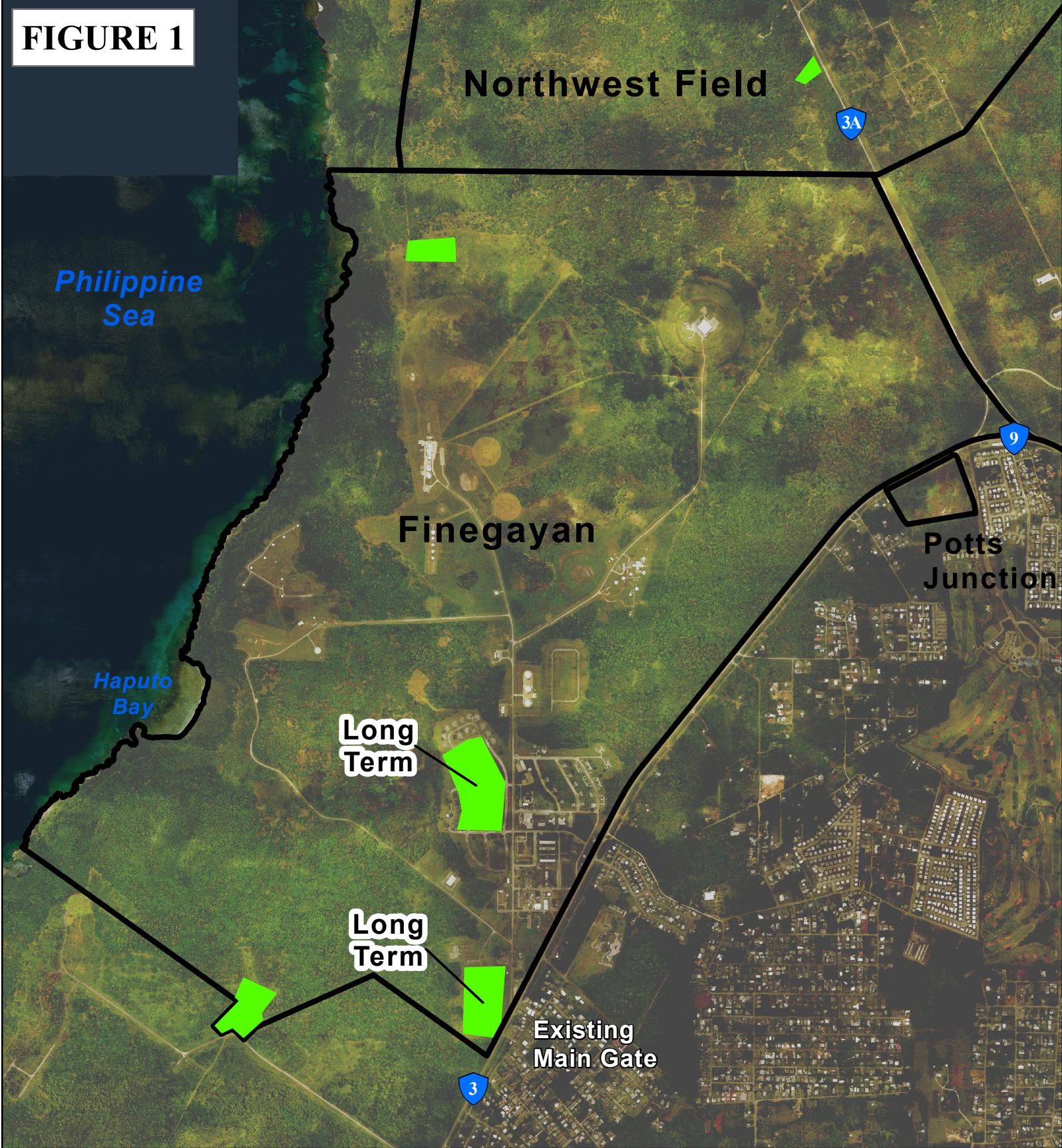
**DETERMINATION OF EFFECT:**

The DoD's determination of effect for the Native Plant Nursery is no historic properties affected.

- 
- 4 | The posting of this PA Memo on the Cultural Resources Information (CRI) website is required by Stipulation IV.E.2. of the 2011 Military Relocation PA as a means for interested members of the public to provide comments on the identification and evaluation of historic properties. Confidentiality requirements under the Archaeological Resources Protection Act (ARPA) and National Historic Preservation Act (NHPA) prohibit federal agencies from publicly disclosing the exact nature and location of historic properties and other types of historic properties such as traditional cultural properties (TCPs).



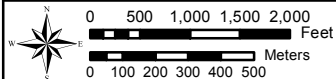
**FIGURE 1**



**Native Plant Nursery Areas  
Figure - 1**

- DoD Property
- Native Plant Nursery Areas

**Native Plant Nursery Areas = 49.9 Ac**



PREPARED BY:  
Naval Facilities Engineering Command Pacific  
Date: 10/27/2015



Coordinate System: UTM Zone 55 North  
Projection: Transverse Mercator  
Datum: D WGS 84

