



Naval Facilities Engineering Command, Pacific
258 Makalapa Drive
Suite 100
Pearl Harbor, HI 96860-3134

**MILITARY RELOCATION TO GUAM AND CNMI
PROGRAMMATIC AGREEMENT (PA) MEMO #1**

Project: P-311 Central Fuel Station; P-312 Distribution Warehouse; P-317 Consolidated EOD Compound; and P-804 Central Issue Facility	Date: March 2, 2021 Comment Period Open Until: April 16, 2021
Project Location: Naval Base Guam Telecommunications Site (NBGTS) Finegayan, Guam	Prepared By: NAVFAC Pacific

PROJECT SUMMARY:

This project is for proposed “vertical” construction, to conduct design studies and subsequently build a central fuel station (P-311), distribution warehouse (P-312), consolidated Explosives Ordnance Disposal (EOD) compound (P-317), and a central issue facility (P-804) to support the development of the cantonment area for the United States Marine Corps (USMC) at NBGTS Finegayan (Figure 1). The project location previously underwent mitigation for the J-001B Utilities and Site Improvements (U&SI) “horizontal” project. The J-001B U&SI consists of roads, drainage systems, water, wastewater, electrical, communications, security fencing, as well as earthwork activities such as vegetation clearance, grading, cutting and filling. The existing site will be open and clear of vegetation.

The subject proposed projects are identified in Appendix E of the 2011 *Programmatic Agreement among the Department of Defense, the Advisory Council on Historic Preservation, the Guam State Historic Preservation Officer, and the Commonwealth of the Northern Mariana Islands State Historic Preservation Officer Regarding the Military Relocation to the Islands of Guam and Tinian* (2011 PA). In accordance with Stipulation V.B.3., this PA Memo presents information to allow the public to provide comments on the identification and evaluation of historic properties and the finding of effect.

PROJECT LOCATION:

The four projects are all located within NBGTS Finegayan, Guam. The projects are on a mostly flat, uplifted limestone plateau. The majority of the interior of the island is comprised of Mariana Limestone.

The project area is located within the village or municipality of Dededo. Although the general area is now commonly referred to as Finegayan or North Finegayan, its pre-World War II name was Machanao. The project location was previously cleared of vegetation through the J-001B project.

The Area of Potential Effect (APE) for P-311 is 6 acres (2.42 hectares); P-312/P-804 is 14.5 acres

1 This PA Memo is required by Stipulation IV.E.2.a. of the PA as a means for interested members of the public to provide comments on the identification and evaluation of historic properties. Stipulation IV.E.1.b. of the PA requires the DoD to take into account comments received within 45 days of the date of the delivery of this PA memo to the SHPO and public notification via the CRI website.

(5.86 hectares); and P-317 6.7 acres (2.71 hectares). See Figure 1 for each project APE.

PROJECT DESCRIPTION:

The subject vertical projects include design and construction for four facilities. Project design and construction efforts include: geospatial surveys, grading and temporary erosion and soil control; pavement for roads, parking, driveways, site, and curbs and gutters; landscaping, fencing, concrete for sidewalks and ramps; electrical power, water (fire protection and potable), sewer, and storm water drainage systems; and possible munitions of explosive concern (MEC) removal. These tasks may require geotechnical borings of varying depths, mechanized excavation, placement of survey markers, and other ground disturbing activities.

P-311 Central Fuel Station: This project would construct vehicle and equipment ready fuel storage facilities, including a multi-outlet fuel filling station, fuel truck filling station and fuel storage facility at Marine Corps Base Camp Blaz (MCBCB). The project also includes an administration building and a generator building constructed with reinforced concrete roofs, walls, slab-on-grade and shallow continuous wall footings. The administration building would be equipped with a laboratory and radon mitigation.

Paving and site improvements for this project consists of site pavement for parking and road access areas, base/subbase, asphalt, drains, sidewalks/ramps, curb & gutters, concrete double-wall spill containment areas, overhead canopy, security fencing around the entire perimeter, concrete masonry unit (CMU) block walls for trash enclosures, pedestrian and bicycle features, bollards, landscaping, and bioswales and stormwater detention/infiltration basin.

P-312 Distribution Warehouse: This project would construct a single-story low bay distribution warehouse. The warehouse would support the Supply, Food Service, and Medical Logistics (MEDLOG) detachments. Structural framing required consists of reinforced concrete with shallow foundations bearing on earth and soil supported slab-on-grade floors. All members would be designed and detailed for Guam's high seismicity, typhoon loading, and long term durability.

Paving and site improvements include pavement for roads, parking, and driveways with curbs and gutters as needed; CMU block walls for trash enclosures; landscaping; site demolition, bollards, chain-link fencing approximately 1.8 meters high and 730 meters in length; concrete for sidewalks and ramps; bicycle features; trash receptacles; and facility signage.

P-317 Consolidated EOD Compound: This project would construct a low-rise Marine Corps EOD facility to support the installation and USMC EOD operations. The building construction includes reinforced concrete floor slabs, roofs, walls, and shallow foundations.

Paving and Site improvements includes asphalt concrete pavement for roadways and parking, concrete vehicle laydown area, an Operational Hazard/Flammable Storage Building constructed with reinforced concrete floor slabs, roofs, walls, and shallow foundations. Design will comply with the MCB Guam Installation Appearance Plan (IAP). Structures would use pre-cast concrete or

2 This PA Memo is required by Stipulation IV.E.2.a. of the PA as a means for interested members of the public to provide comments on the identification and evaluation of historic properties. Stipulation IV.E.1.b. of the PA requires the DoD to take into account comments received within 45 days of the date of the delivery of this PA memo to the SHPO and public notification via the CRI website.

cast-in-place concrete construction with walls, flooring, foundation, roofing, mechanical, and electrical systems appropriate for Guam earthquake and environmental conditions. Other requirements are a trash enclosure with CMU block walls, concrete walkways, 2.4 m high x 704 m long chain link security fence with gates (swinging pedestrian and sliding vehicle) and barbed wire, bollards, bicycle rack and a ready service locker pad. The ground improvements include topsoil, grassing, a trench drain at top of embankment slope, drainage swale and drainage basin consistent with the Guam Master Plan, Low Impact Development (storm water strategy), and the storm water pollution prevention plan.

P-317 Consolidated EOD Compound; and P-804 Central Issue Facility: Project would construct a low rise Central Issue Facility (CIF) with Individual Issue Facility (IIF) and Unit Issue Facility (UIF) storage and processing areas, and a Chemical Biological Radiological Nuclear Equipment (CBRNE) storage area at MCB Guam (Finegayan). The facility consists of reinforced concrete with all components such as, exterior walls, flooring, foundation, windows, roofing, mechanical, electrical, fire sprinklers and fire alarm/mass notification system and informational systems appropriate to Guam earthquake and environmental conditions, and designed to meet applicable Unified Facility Criteria (UFC). This project includes perimeter/security fencing, two (2) vehicle gates, and a personnel gate that can provide Level 2 minimum security measures in accordance with the Marine Corps Physical Security Program Manual. As such, the costs for specific security measure features are included in the unit costs. Built-in equipment includes commercial washers and dryers, fire pump, pallet racks, and back-up generator.

Paving and site improvements would include Asphalt Concrete (AC) parking for approximately 60 vehicles; AC yard/apron; AC access road; concrete sidewalks; fencing & gates; pipe bollards; trash/recycling enclosures; concrete & grass swale, infiltration basin, and landscaping.

IDENTIFICATION OF HISTORIC PROPERTIES:

In planning for the Undertaking, the Department of Defense (DoD) first conducted a data gap analysis to determine the need for supplemental identification and evaluation surveys and then conducted those surveys. This proposed project was determined to require supplemental identification and evaluation efforts, and the results have been applied to the siting/lay down of the proposed project.

DoD surveys and evaluations have focused on project-specific APEs, defined consistent with 36 CFR §800.16(d) to include those portions of the island of Guam subject to direct and indirect effects of projects included in the Undertaking. Both architectural and archaeological assessments have been completed.

More specifically, the APEs for these vertical projects have been subject to one or more of the historic property identification efforts listed in 36 CFR §800.4(b)(1), which may include background research, consultation, oral history interviews, sample field investigation and field survey. As such, results of identification and evaluation efforts in the vicinity of, and including the APEs for the projects can be found in the following original studies of cultural and/or historic resources (Figure 2):

- 3** This PA Memo is required by Stipulation IV.E.2.a. of the PA as a means for interested members of the public to provide comments on the identification and evaluation of historic properties. Stipulation IV.E.1.b. of the PA requires the DoD to take into account comments received within 45 days of the date of the delivery of this PA memo to the SHPO and public notification via the CRI website.

Athens, J.S.

2009 *Archaeological Surveys and Cultural Resources Studies on Guam and the Commonwealth of the Northern Mariana Islands in Support of the Joint Guam Build-Up Environmental Impact Statement* Volume I: Guam. Prepared for Naval Facilities Engineering Command, Pacific Division, Pearl Harbor, Hawaii. International Archaeological Research Institute, Inc. Honolulu, Hawaii.

Church, M., J. Hokanson, J. Gallison, and M. Jennings

2009 *Cultural Resources Survey of 297 Acres at Andersen Air Force Base, Guam*. Prepared for Andersen Air Force Base, Guam. Engineering-Environmental Management, Inc., Englewood, Colorado.

Dixon, Boyd, S. Walker and R. Schaefer

2011 *Cultural Resource Investigations Conducted in the Territory of Guam Supporting the Joint Guam Build-Up Environmental Impact Statement: Final Archaeological Surveys on Guam 2008-2009 at Air Force Barrigada, Proposed Live Fire Training Range, Andersen South, and Naval Base Guam*. Prepared for Naval Facilities Engineering Command, Pacific Division, Pearl Harbor, Hawaii. TEC Inc., Honolulu, Hawaii.

Dixon, B. and S. Walker

2011 *Cultural Resource Investigations Conducted in the Territory of Guam Supporting the Joint Guam Build-Up Environmental Impact Statement: Final Archaeological Surveys on Guam 2009 at Proposed Utility Sites, Harmon Property, and Andersen AFB*. Prepared for Naval Facilities Engineering Command, Pacific Division, Pearl Harbor, Hawaii. TEC Inc., Honolulu, Hawaii.

Dixon, B., T. Rudolph, A. Jalandoni, I. Nelson, M. Hroncich-Conner, S. Leary, R. Schaefer, E. Lash, M. Todd

2015 *Proposed Guam and CNMI Military Relocation 2012 Roadmap Adjustments SEIS Live-Fire Training Range Complex Footprints, Main Cantonment, Utilities, Communications, Well Field Alternatives and Access Route Options* Volume I: Potential Direct Impact Area In-Fill Cultural Resources Study Narrative. Prepared for Naval Facilities Engineering Command Pacific, Pearl Harbor, Hawaii. Cardno TEC, Inc., Honolulu, Hawaii.

Dixon, B., T. McCurdy, R. Shaefer, R. Jones, I. Nelson

2016 *Andersen Air Force Base, Guam, National Historic Preservation Act Section 110 Cultural Resources Identification and Evaluation Studies*. Prepared for Naval Facilities Engineering Command Pacific, Pearl Harbor, Hawaii. Cardno TEC, Inc., Honolulu, Hawaii.

Dixon, B., D. Welch, T. Rudolph, R. Jones, and I. Nelson

2018 *Final Technical Report: Archaeological Data Recovery in Support of the J-0001B Utilities and Site Improvements at Naval Base, Guam Telecommunications Site, Guam*. Prepared for Naval Facilities Engineering Command, Pacific Division, Pearl Harbor, Hawaii. TEC Inc.

4 This PA Memo is required by Stipulation IV.E.2.a. of the PA as a means for interested members of the public to provide comments on the identification and evaluation of historic properties. Stipulation IV.E.1.b. of the PA requires the DoD to take into account comments received within 45 days of the date of the delivery of this PA memo to the SHPO and public notification via the CRI website.

and the University of Guam. (GIS data labeled 2017)

Eakin, J., K. Higelmire and D. DeFant

2012 *Archaeological Data Recovery Report Guam Military Relocation MILCON Projects P-100 (North Ramp Utilities) and P-101 (North Ramp Parking), Andersen Air Force Base, Territory of Guam.* Prepared for Department of the Navy, Naval Facilities Engineering Command, Pacific, Pearl Harbor, Hawaii. Southeastern Archaeological Research, Inc. (SEARCH).

Haun, A.E.

1988 *Archaeological Reconnaissance Survey and Field Inspections of Relocatable Over-the-Horizon Radar Sites on Guam, Mariana Islands, Micronesia.* Prepared for Wilson Okimoto and Associates, Inc., Honolulu, Hawaii. Paul H. Rosendahl, PhD, Inc., Hilo, Hawaii.

Highness, D. and A. Haun

1990 *Archaeological Inventory Survey DTS Facility: Barrigada and Finegayan Sites, Dededo and Barrigada Municipalities, Territory of Guam.* Prepared for Belt, Collins, & Associates, Inc., Honolulu, Hawaii. Paul H. Rosendahl, PhD, Inc., Hilo, Hawaii.

Hokanson, Jeffrey H., J. David Kilby, Michael Church and Mary R. McCurdy

2008 *Cultural Resources Survey for a Perimeter Fence and Portions of the Munitions Storage Area, Andersen Air Force Base, Guam.* Prepared for Andersen Air Force Base. Engineering-environmental Management, Inc., Englewood, Colorado.

Kurashina, H., T. McGrath, and H. Manner

1987 *Archaeological Survey of Areas 1, 2, 1-A and 2-A at Northwest Field, Andersen Air Force Base and Naval Communication Area Master Station Western Pacific, Finegayan, Guam, Marianas Islands.* Prepared for Naval Facilities Engineering Command, Pacific, Pearl Harbor, Hawaii. Micronesian Area Research Center, University of Guam, Mangilao, Guam.

Pacheco, T., T. Rieth, and R. DiNapoli

2020 *Archaeological Monitoring in Support of Finegayan Utilities and Site Improvements Phase I, Naval Computer and Telecommunications Station, Guam.* 4 Volumes. Prepared for Department of the Navy, Pacific Division, Naval Facilities Engineering Command, Pearl Harbor, Hawaii. International Archaeological Research Institute, Inc., Honolulu, Hawaii.

Welch, D.

2010 *Archaeological Survey and Cultural Resource Studies Conducted in 2007 on the Island of Guam in Support of the Join Guam Build-Up Environmental Impact Statement.* 2 volumes. Prepared for Department of the Navy, Pacific Division, Naval Facilities Engineering Command, Pearl Harbor, Hawaii. International Archaeological Research Institute, Inc.,

Honolulu, Hawaii.

There is one archaeological area partially located in the APE for P-311. The area was identified during work for J-001B U&SI, and inadvertent discovery procedures were initiated. Archaeological research documented Latte Period ceramic sherds, burnt soil with evidence of charcoal, burnt organic material, and evidence of pit features and hearths. In addition, human burials were identified in the area, which has subsequently been preserved in place; a permanent memorial will be installed at this location. Mitigation on the area was completed, and the site is no longer extant, although the eligibility status remains on record.

In accordance with the 2011 PA, the Department of the Navy (DON) notifies the Guam SHPO (State Historic Preservation Office) of any new discoveries and evaluates these discoveries to assess potential effects. Additionally, the DON consults with the SHPO on appropriate plans to resolve adverse effects if eligible sites are found through monitoring.

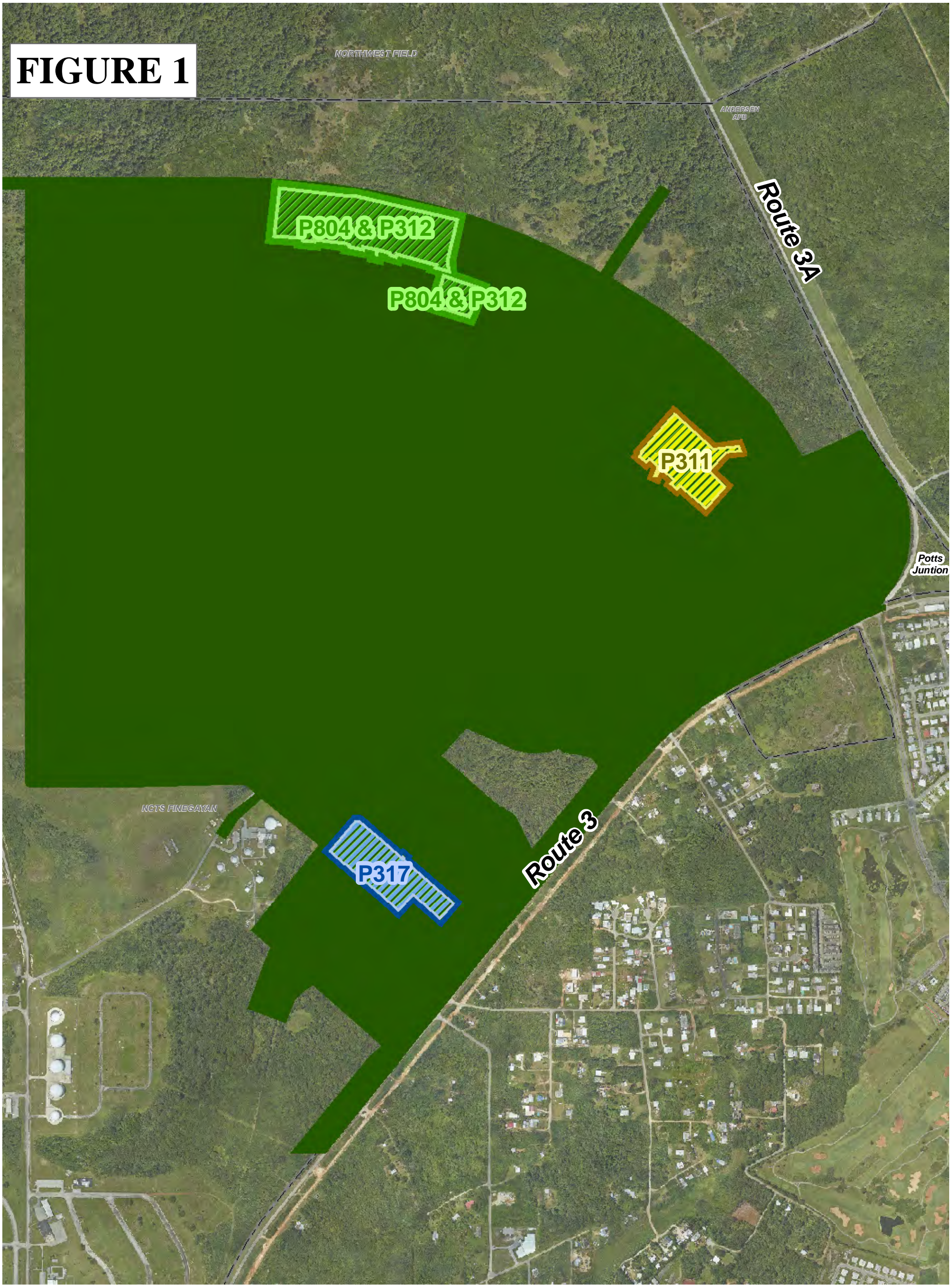
In accordance with Stipulation VI.F. of the PA, the DoD has retained a full-time Archaeologist to provide site checks, oversee coordination and execution of the archaeological mitigation measures in the PA and to provide quality control. This individual is on-staff at Marine Corps Base Camp Blaz, Public Works Department, and is also designated to respond to and report any inadvertent discoveries to the Signatories, Invited Signatories, and Concurring Parties per Stipulation XII of the PA.

DETERMINATION OF EFFECT:

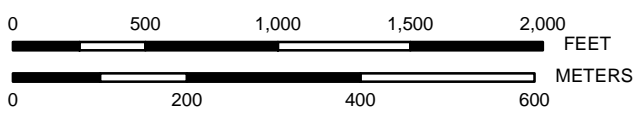
No historic properties are extant in the APE, as the aforementioned archaeological area was previously mitigated as part of the J-001B U&SI project. Therefore, the DoD has determined that this project will have no historic properties affected. PA Memo #2 will not be required as no mitigation efforts will be necessary.

6 This PA Memo is required by Stipulation IV.E.2.a. of the PA as a means for interested members of the public to provide comments on the identification and evaluation of historic properties. Stipulation IV.E.1.b. of the PA requires the DoD to take into account comments received within 45 days of the date of the delivery of this PA memo to the SHPO and public notification via the CRI website.

FIGURE 1



MILCON P-311, P-317, P-312, and P-804 Projects at NBGTS Finegayan - Construction Area



PREPARED BY:
Naval Facilities Engineering Command Pacific Division
Guam Program Management Office
DATE: 14 Dec 2020



Coordinate System: UTM Zone 55 North
Projection: Transverse Mercator
Datum: D WGS 1984

Legend

MILCON Projects

- P-311 (Central Fuel Station) Project APE
- P-317 (Combined EOD Facility) Project APE
- P-804 (Central Issue Facility) & P-312 (Distribution Warehouse) Project APE

- J-001B (U&SI) Construction
- Military Installations

Total APE Area:
P-804 / P-312 = 14.5 Ac.
P-311 = 6 Ac.
P-317 = 6.7 Ac.



FIGURE 2

NORTHWEST FIELD

ANDERSEN AFB

P804 & P312

P804 & P312

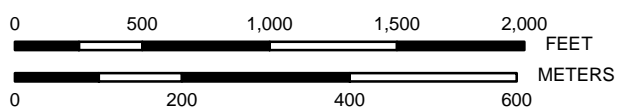
P311

NCTS FINEGAYAN

POTTS JUNCTION TANK FARM

P317

MILCON P-311, P-317, P-312, and P-804 Projects at NBGTS Finegayan - Survey Areas



PREPARED BY:
 Naval Facilities Engineering Command Pacific Division
 Guam Program Management Office
 DATE: 03 Feb 2021



Coordinate System: UTM Zone 55 North
 Projection: Transverse Mercator
 Datum: D WGS 1984

Legend

MILCON APEs

- P-311 (Central Fuel Station) Project APE
- P-317 (Combined EOD Facility) Project APE
- P-804 (Central Issue Facility) & P-312 (Distribution Warehouse) Project APE
- J-001B (U&SI) Construction Footprint
- Military Installations

Cultural Survey Areas

- Athens 2009
- Church et al. 2009
- Dixon 2015
- Dixon and Walker 2011
- Dixon et al. 2011
- Dixon et al. 2016
- Eakin et al. 2012
- Haun 1988
- Highness and Haun 1990
- Hokanson et al. 2008
- Kurashina et al. 1987
- Pacheco et al. 2020
- Welch 2010
- Dixon et al. 2018



Date: 2/3/2021 Time: 9:25:21 AM Path: C:\Users\laaron.pulliam\OneDrive\OneDrive - United States Department of the Navy\Documents\GIS Projects\MXDs\Finegayan\EWPA\J011_J025_P311_P317_P312_P804PA_MEMO_FINEGAYAN_J011_J025_P311_P317_P312_P804PA_Memo_Finegayan - Figure 2.mxd

Military Relocation PA Memo Comment Form

2021

If submitting via **e-mail**, scan and send to: criwebcomment@navy.mil

If submitting via **postal mail**, send to:

Attn: CRI Web Comments
Code EV23, NAVFAC Pacific
258 Makalapa Drive, Suite 100
JBPHH, Hawaii 96860-3134

Submitted comments will be posted on the Navy's Cultural Resources Information (CRI) web site. Information presented on the CRI web site is considered public. The sections highlighted in **red** are required to be completed in order for a comment to be posted.

Privacy Act Statement

Personal information will only be used to contact you regarding the comments you submit. This information will only be shared with another government agency if your inquiry relates to that agency, or as otherwise required by law. We will not create individual profiles or give your information to any private organization. While you must provide a valid e-mail address or postal address, please **DO NOT** include personally identifying information such as a social security number.

By submitting this comment form, you agree not to include content that is offensive in nature, such as profanity, personal attacks on individuals, and racist or abusive language.

PROJECT: Multiple Vertical Construction Project in Camp Blaz Main Cantonment Area

SUBJECT: PA Memo #1, Design and Construction of P-311 Central Fuel Station, P-312 Distribution Warehouse, P-317 Consolidated Explosive Ordnance Disposal (EOD) Compound and P-804 Central Issue Facility

Date: _____

Name: _____

CRI User Name (if you don't want your real name to be posted with your comment on the CRI web site):

E-Mail Address: _____

and/or

Postal Mail Address: _____

COMMENTS: _____
