



**Naval Facilities Engineering Systems Command,
Pacific**
258 Makalapa Drive
Suite 100

MILITARY RELOCATION TO GUAM AND CNMI PROGRAMMATIC AGREEMENT (PA) MEMO #1

<p>Project: P-305 Marine 4th Regiment Facilities; P-306 Combat Logistics Battalion – 4 Facilities; P-307 Consolidated Armory Facility; P-310 Infantry Battalion Company Headquarters; P-314 Marine Expeditionary Brigade; P-326 Primary End Item Warehouse; P-802 General Support Base Warehouse; P-803 Individual Combat Skill Training Area</p>	<p>Date: June 8, 2021 Comment Period Open Until: July 22, 2021</p>
<p>Project Location: Naval Base Guam Telecommunications Site (NBGTS) Finegayan, Guam</p>	<p>Prepared By: NAVFAC Pacific</p>

PROJECT SUMMARY:

This submittal is for eight proposed “vertical” construction, including design studies for Marine 4th Regiment Facilities (P-305), Combat Logistics Battalion – 4 Facilities (P-306), Consolidated Armory Facility (P-307), Infantry Battalion Company Headquarters (P-310), Marine Expeditionary Brigade (MEB) Enablers Facility (P-314), Primary End Item Warehouse (P-326), General Support Base Warehouse (P-802), and Individual Combat Skill Training Area (P-803) at United States Marine Corps (USMC) at NBGTS Finegayan (Figure 1).

The construction is identified in Appendix E of the 2011 *Programmatic Agreement among the Department of Defense, the Advisory Council on Historic Preservation, the Guam State Historic Preservation Officer, and the Commonwealth of the Northern Mariana Islands State Historic Preservation Officer Regarding the Military Relocation to the Islands of Guam and Tinian* (2011 PA).

The subject vertical construction projects are located within the J-001B Utilities and Site Improvements (U&SI) project area. The construction location previously underwent mitigation for the J-001B U&SI “horizontal” project, as stipulated by the 2011 PA. The J-001B U&SI project consists of roads, drainage systems, water, wastewater, electrical, communications, security fencing, as well as earthwork activities such as vegetation clearance, grading, cutting/and filling. During this ongoing work, the Navy is conducting additional archaeological efforts consistent with the 2018 resolution agreement with Guam SHPO. Completion of clearing and grading work, and archaeological investigations will occur prior to vertical construction.

In accordance with Stipulation IV.E.2.a., this PA Memo presents information to allow the public and interested parties to provide comments on the identification and evaluation of historic properties and the finding of effect.

1 This PA Memo is required by Stipulation IV.E.2.a. of the PA as a means for interested members of the public to provide comments on the identification and evaluation of historic properties. Stipulation IV.E.1.b. of the PA requires the DoD to take into account comments received within 45 days of the date of the delivery of this PA memo to the SHPO and public notification via the CRI website.

PROJECT LOCATION:

All eight projects are located within the J-001B U&SI Area of Potential Effects (APE), at NBGTS Finegayan, Guam. The projects are on a mostly flat, uplifted limestone plateau. The majority of the interior of the island is comprised of Mariana Limestone.

The project area is located within the village or municipality of Dededo. Although the general area is now commonly referred to as Finegayan or North Finegayan, its pre-World War II name was Machanao.

The APE for P-305 is 16.5 acres (6.67 hectares); P-306 is 21.9 acres (8.86 hectares); P-307 is 3.9 acres (1.57 hectares); P-310 is 1.4 acres (0.56 hectares); P-314 is 1.3 acres (0.52 hectares); P-326 is 5.8 acres (2.34 hectares); P-802 is 6.7 acres (2.71 hectares); and P-803 is 16.7 acres (6.75 hectares). See Figure 1 for the APE.

PROJECT DESCRIPTION:

The subject vertical projects include design and construction for eight facilities. Project design and construction efforts include: geospatial surveys, clearing, grubbing, grading and temporary erosion and soil control; pavement for roads, parking, driveways, site, and curbs and gutters; landscaping, fencing, concrete for sidewalks and ramps; electrical power, water (fire protection and potable), sewer, and storm water drainage systems; and possible munitions of explosive concern (MEC) removal. These tasks may require geotechnical borings of varying depths, mechanized excavation, placement of survey markers, and other similar activities.

P-305 Marine 4th Regiment Facilities: Project will construct a low-rise facility to support the 4th Marine Regiment, consisting of an electronics-communications maintenance shop, auto maintenance shop (with dispatch shed), Company level administrative space, two grease racks for vehicles, organic storage and four vehicle wash facilities for vehicles.

P-306 Combat Logistics Battalion – 4 Facilities: Project will construct a series of low rise facilities to support the Combat Logistics Battalion (CLB)-4 consisting of an administrative office, automotive maintenance shop (with dispatch shed), construction-weight handling shop, communications/electronics maintenance shop, wash racks, grease racks, hazardous materials storage, general purpose classrooms, and an organic storage warehouse.

P-307 Consolidated Armory Facility: Project will construct a low-rise consolidated armory facility in support of 3rd Marine Expeditionary Brigade (MEB) Headquarters, 4th Marine Regimental Headquarters, two Infantry Battalions, Amphibious Attack Vehicle/Combat Engineer Battalion/Light Armored Reconnaissance platoons, Combat Logistics Battalion (CLB)-4 and Base Operations requirements.

P-310 Infantry Battalion Company Headquarters: Project will construct a multi-story administrative office for two Infantry Battalion Company Headquarters.

2 This PA Memo is required by Stipulation IV.E.2.a. of the PA as a means for interested members of the public to provide comments on the identification and evaluation of historic properties. Stipulation IV.E.1.b. of the PA requires the DoD to take into account comments received within 45 days of the date of the delivery of this PA memo to the SHPO and public notification via the CRI website.

P-314 Marine Expeditionary Brigade (MEB) Enablers Facility: Project will construct a Marine Expeditionary Brigade (MEB) Enablers facility with administrative, supply, direct support, and maintenance spaces. A separate but adjacent communications warehouse building for communications storage and supply storage will also be included.

P-326 Primary End Item Warehouse: Project will construct a Primary End Item (PEI) Warehouse structure for the storage of operational military vehicles.

P-802 General Support Base Warehouse: Project will construct a low-rise high-bay general support warehouse required for storage and distribution of Direct Support Stock Control (DSSC) consumables. The warehouse will provide storage and administrative space to support Distribution Management Office (DMO), Base Supply, Food Services, and General Services Administration (GSA) daily operations. Since the facility will support several agencies, physical separation between functional areas is required. In addition to the storage and administration areas, the facility will include conference rooms, break rooms, and a reception area with audio/visual capabilities.

P-803 Individual Combat Skill Training Area: Project will construct a covered Training Area an attached Comfort Station (including restroom and water fountain facilities), Field Training Area, Rappel Training Area, Hand-to-Hand Combat Pit, and an Obstacle Course.

IDENTIFICATION OF HISTORIC PROPERTIES:

In planning for the Undertaking, the Department of Defense (DoD) first conducted a data gap analysis to determine the need for supplemental identification and evaluation surveys and then conducted those surveys. This proposed project was determined to require supplemental identification and evaluation efforts, and the results have been applied to the siting/lay down of the proposed project.

DoD surveys and evaluations have focused on project-specific APEs, defined consistent with 36 CFR §800.16(d) to include those portions of the island of Guam subject to direct and indirect effects of projects included in the Undertaking.

More specifically, the APE for these vertical projects have been subject to one or more of the historic property identification efforts listed in 36 CFR §800.4(b)(1), which may include background research, consultation, oral history interviews, sample field investigation and field survey. As such, results of identification and evaluation efforts in the vicinity of, and including the APEs for the projects can be found in the following original studies of cultural and/or historic resources (Figure 2):

Athens, J.S.

2009 *Archaeological Surveys and Cultural Resources Studies on Guam and the Commonwealth of the Northern Mariana Islands in Support of the Joint Guam Build-Up Environmental Impact Statement* Volume I: Guam. Prepared for Naval Facilities Engineering Command, Pacific Division, Pearl Harbor, Hawaii. International Archaeological Research Institute, Inc.

- 3** This PA Memo is required by Stipulation IV.E.2.a. of the PA as a means for interested members of the public to provide comments on the identification and evaluation of historic properties. Stipulation IV.E.1.b. of the PA requires the DoD to take into account comments received within 45 days of the date of the delivery of this PA memo to the SHPO and public notification via the CRI website.

Honolulu, Hawaii.

Church, M., J. Hokanson, J. Gallison, and M. Jennings

2009 *Cultural Resources Survey of 297 Acres at Andersen Air Force Base, Guam*. Prepared for Andersen Air Force Base, Guam. Engineering-Environmental Management, Inc., Englewood, Colorado.

Dixon, Boyd, S. Walker and R. Schaefer

2011 *Cultural Resource Investigations Conducted in the Territory of Guam Supporting the Joint Guam Build-Up Environmental Impact Statement: Final Archaeological Surveys on Guam 2008-2009 at Air Force Barrigada, Proposed Live Fire Training Range, Andersen South, and Naval Base Guam*. Prepared for Naval Facilities Engineering Command, Pacific Division, Pearl Harbor, Hawaii. TEC Inc., Honolulu, Hawaii.

Dixon, B. and S. Walker

2011 *Cultural Resource Investigations Conducted in the Territory of Guam Supporting the Joint Guam Build-Up Environmental Impact Statement: Final Archaeological Surveys on Guam 2009 at Proposed Utility Sites, Harmon Property, and Andersen AFB*. Prepared for Naval Facilities Engineering Command, Pacific Division, Pearl Harbor, Hawaii. TEC Inc., Honolulu, Hawaii.

Dixon, B., T. Rudolph, A. Jalandoni, I. Nelson, M. Hroncich-Conner, S. Leary, R. Schaefer, E. Lash, M. Todd

2015 *Proposed Guam and CNMI Military Relocation 2012 Roadmap Adjustments SEIS Live-Fire Training Range Complex Footprints, Main Cantonment, Utilities, Communications, Well Field Alternatives and Access Route Options Volume I: Potential Direct Impact Area In-Fill Cultural Resources Study Narrative*. Prepared for Naval Facilities Engineering Command Pacific, Pearl Harbor, Hawaii. Cardno TEC, Inc., Honolulu, Hawaii.

Dixon, B., T. McCurdy, R. Shaefer, R. Jones, I. Nelson

2016 *Andersen Air Force Base, Guam, National Historic Preservation Act Section 110 Cultural Resources Identification and Evaluation Studies*. Prepared for Naval Facilities Engineering Command Pacific, Pearl Harbor, Hawaii. Cardno TEC, Inc., Honolulu, Hawaii.

Dixon, B., D. Welch, T. Rudolph, R. Jones, and I. Nelson

2018 *Final Technical Report: Archaeological Data Recovery in Support of the J-0001B Utilities and Site Improvements at Naval Base, Guam Telecommunications Site, Guam*. Prepared for Naval Facilities Engineering Command, Pacific Division, Pearl Harbor, Hawaii. TEC Inc. and the University of Guam. (GIS data labeled 2017)

Eakin, J., K. Higelmire and D. DeFant

2012 *Archaeological Data Recovery Report Guam Military Relocation MILCON Projects P-100 (North Ramp Utilities) and P-101 (North Ramp Parking), Andersen Air Force Base, Territory of Guam*. Prepared for Department of the Navy, Naval Facilities Engineering

4 This PA Memo is required by Stipulation IV.E.2.a. of the PA as a means for interested members of the public to provide comments on the identification and evaluation of historic properties. Stipulation IV.E.1.b. of the PA requires the DoD to take into account comments received within 45 days of the date of the delivery of this PA memo to the SHPO and public notification via the CRI website.

Command, Pacific, Pearl Harbor, Hawaii. Southeastern Archaeological Research, Inc. (SEARCH).

Haun, A.E.

1988 *Archaeological Reconnaissance Survey and Field Inspections of Relocatable Over-the-Horizon Radar Sites on Guam, Mariana Islands, Micronesia*. Prepared for Wilson Okimoto and Associates, Inc., Honolulu, Hawaii. Paul H. Rosendahl, PhD, Inc., Hilo, Hawaii.

Highness, D. and A. Haun

1990 *Archaeological Inventory Survey DTS Facility: Barrigada and Finegayan Sites, Dededo and Barrigada Municipalities, Territory of Guam*. Prepared for Belt, Collins, & Associates, Inc., Honolulu, Hawaii. Paul H. Rosendahl, PhD, Inc., Hilo, Hawaii.

Hokanson, Jeffrey H., J. David Kilby, Michael Church and Mary R. McCurdy

2008 *Cultural Resources Survey for a Perimeter Fence and Portions of the Munitions Storage Area, Andersen Air Force Base, Guam*. Prepared for Andersen Air Force Base. Engineering-environmental Management, Inc., Englewood, Colorado.

Kurashina, H., T. McGrath, and H. Manner

1987 *Archaeological Survey of Areas 1, 2, 1-A and 2-A at Northwest Field, Andersen Air Force Base and Naval Communication Area Master Station Western Pacific, Finegayan, Guam, Marianas Islands*. Prepared for Naval Facilities Engineering Command, Pacific, Pearl Harbor, Hawaii. Micronesian Area Research Center, University of Guam, Mangilao, Guam.

Pacheco, T., T. Rieth, and R. DiNapoli

2020 *Archaeological Monitoring in Support of Finegayan Utilities and Site Improvements Phase I, Naval Computer and Telecommunications Station, Guam*. 4 Volumes. Prepared for Department of the Navy, Pacific Division, Naval Facilities Engineering Command, Pearl Harbor, Hawaii. International Archaeological Research Institute, Inc., Honolulu, Hawaii.

Welch, D.

2010 *Archaeological Survey and Cultural Resource Studies Conducted in 2007 on the Island of Guam in Support of the Joint Guam Build-Up Environmental Impact Statement*. 2 volumes. Prepared for Department of the Navy, Pacific Division, Naval Facilities Engineering Command, Pearl Harbor, Hawaii. International Archaeological Research Institute, Inc., Honolulu, Hawaii.

Archaeological studies identified the presence of historic properties in the project location. The J-001B U&SI project mitigated historic properties as stipulated in the 2011 PA. Subsequently, the 2018 resolution agreement between the Navy and Guam SHPO implements monitoring and archaeological investigation for discoveries identified during J-001B U&SI activities. Ongoing

5 This PA Memo is required by Stipulation IV.E.2.a. of the PA as a means for interested members of the public to provide comments on the identification and evaluation of historic properties. Stipulation IV.E.1.b. of the PA requires the DoD to take into account comments received within 45 days of the date of the delivery of this PA memo to the SHPO and public notification via the CRI website.

investigations are executing the agreed upon mitigative work that will collect data to characterize the sites prior to the commencement of vertical construction. The historic properties that are present within the APE will no longer be extant once mitigation is complete (i.e., qualifying characteristics will have been altered and the integrity diminished).

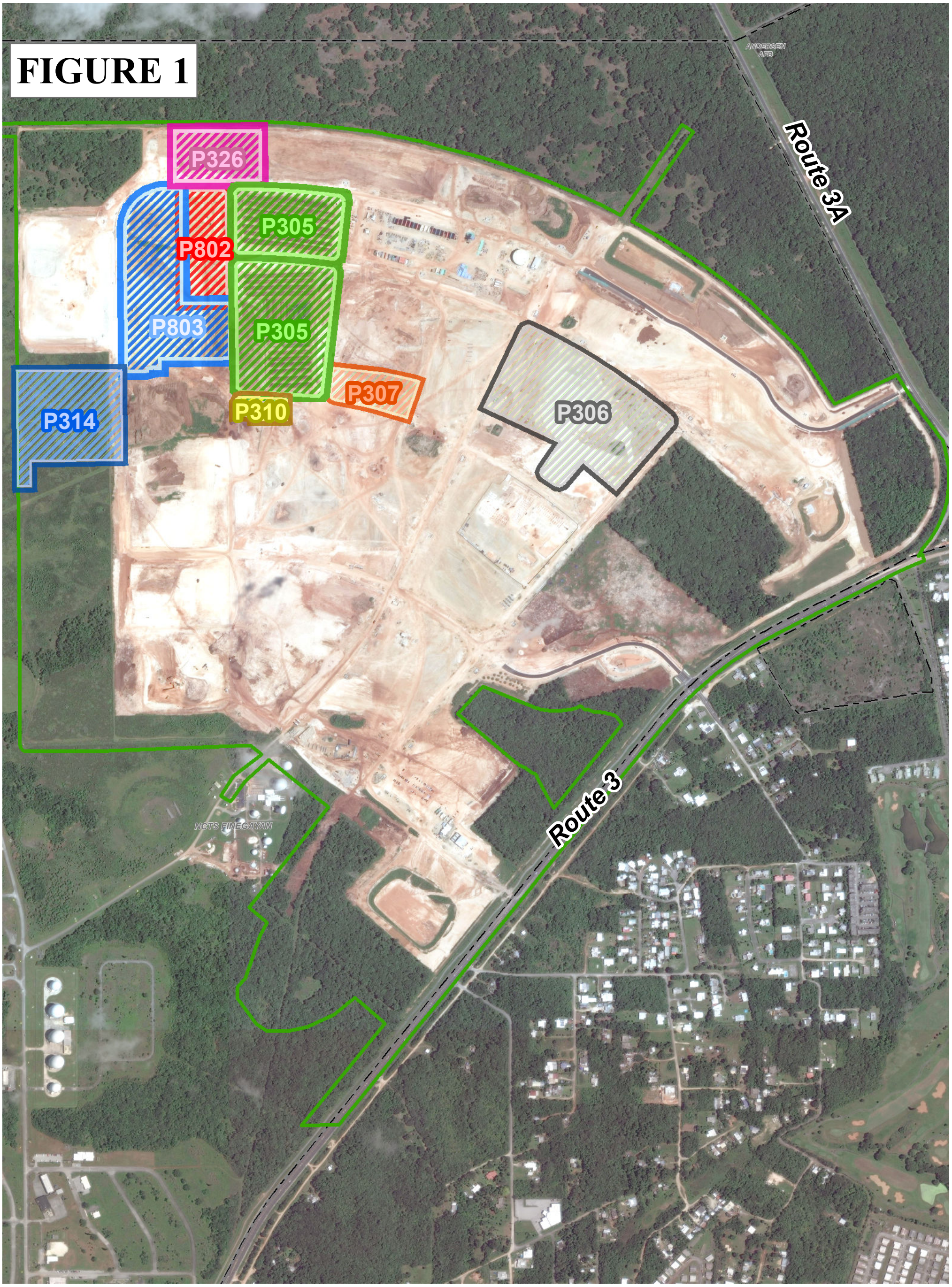
In accordance with Stipulation VI.F. of the PA, the DoD has retained a full-time Archaeologist to provide site checks, oversee coordination and execution of the archaeological mitigation measures in the PA and to provide quality control. This individual is on-staff at Camp Blaz, and is designated to respond to and report any discoveries to the Signatories, Invited Signatories, and Concurring Parties per Stipulation XII of the PA. The 2018 resolution agreement also requires the Department of the Navy (DON) to notify the Guam SHPO of any new discoveries and evaluate these discoveries to assess effects.

FINDING OF EFFECT:

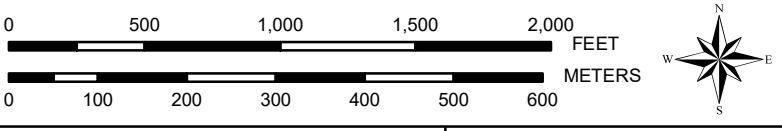
As aforementioned, mitigation in accordance with the 2011 PA has been completed for the J-001B U&SI project. The Navy's ongoing mitigation consistent with the 2018 resolution agreement will conclude prior to vertical construction. The combined efforts under each agreement addresses direct and indirect effects to qualifying characteristics of historic properties. The DoD finds that this project will have no historic properties affected because while historic properties have been identified in the APE, adverse effects are being mitigated by the J-001B U&SI project and once completed, the properties will no longer retain integrity and will have had qualifying characteristics altered. Thus, vertical construction will have no effect upon them as defined in § 800.16(i) . PA Memo #2 will not be required as there will be no further mitigation.

6 This PA Memo is required by Stipulation IV.E.2.a. of the PA as a means for interested members of the public to provide comments on the identification and evaluation of historic properties. Stipulation IV.E.1.b. of the PA requires the DoD to take into account comments received within 45 days of the date of the delivery of this PA memo to the SHPO and public notification via the CRI website.

FIGURE 1



**Camp Blaz - MILCON Projects and J-001B APE
Stage 1 - PA Memo - Construction Area**



PREPARED BY:
Naval Facilities Engineering Command Pacific Division
Guam Program Management Office
DATE: 12 May 2021



Coordinate System: Geographic
Projection: N/A
Datum: D WGS 1984

Legend

MILCON

- Project Areas (APE)**
- P305
 - P306
 - P307
 - P310
 - P314
 - P326
 - P802
 - P803

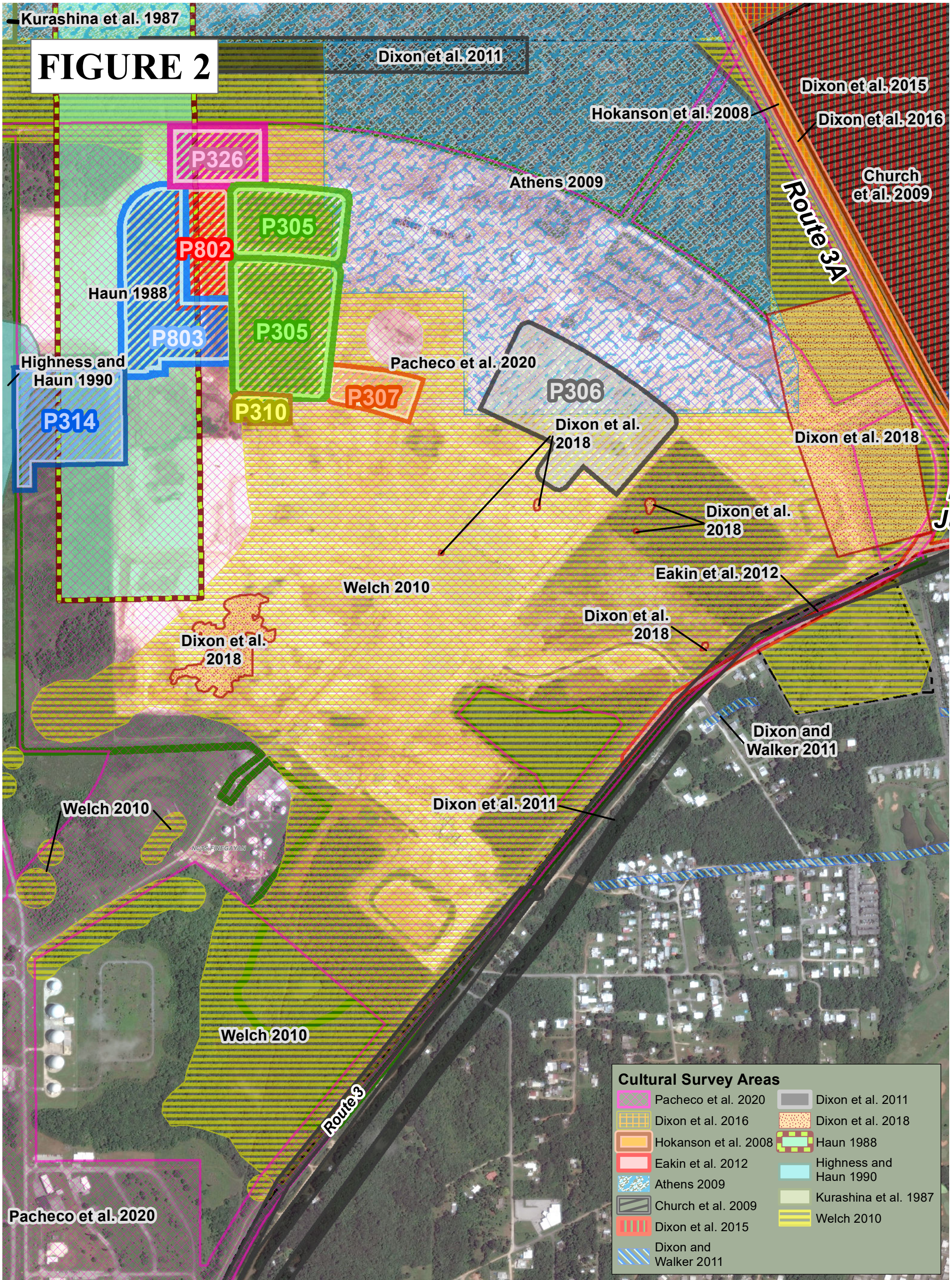
- J-001B (U&SI) Construction Footprint
- Military Installations

- MILCON APE**
- P802 - 6.7 ac.
 - P803 - 16.7 ac.
 - P307 - 3.9 ac.
 - P306 - 21.9 ac.
 - P305 - 16.5 ac.
 - P310 - 1.4 ac.
 - P326 - 5.8 ac.
 - P305 - 9.2 ac.
 - P314 - 13.3 ac.



Date: 5/12/2021 Time: 4:43:09 PM Path: C:\Users\laron.pulliam\OneDrive\Documents\GIS Projects\MXDs\Finegayan\EVPA\Stage 1\PA_Memo_CampBlaz_MAMIZU_MILCON_Stage1_GSHPO - Figure 3.mxd

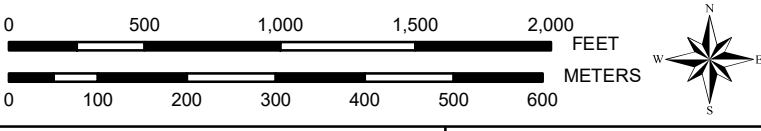
FIGURE 2



Cultural Survey Areas

	Pacheco et al. 2020		Dixon et al. 2011
	Dixon et al. 2016		Dixon et al. 2018
	Hokanson et al. 2008		Haun 1988
	Eakin et al. 2012		Highness and Haun 1990
	Athens 2009		Kurashina et al. 1987
	Church et al. 2009		Welch 2010
	Dixon et al. 2015		
	Dixon and Walker 2011		

Camp Blaz - MILCON Projects and J-001B APE Stage 1 - PA Memo - Survey Areas



PREPARED BY:
Naval Facilities Engineering Command Pacific Division
Guam Program Management Office
DATE: 12 May 2021



Coordinate System: UTM Zone 55 North
Projection: Transverse Mercator
Datum: D WGS 1984

Legend

MILCON Project Areas (APE)

	P305		J-001B (U&SI) Construction Footprint
	P306		Military Installations
	P307		
	P310		
	P314		
	P326		
	P802		
	P803		



Date: 5/12/2021 Time: 4:46:46 PM Path: C:\Users\laaron.pulliam\OneDrive\OneDrive\Projects\GIS\Projects\IMXDs\Finegayan\EVPA\Stage 1\PA_Memo_CampBlaz_MAMIZU_MILCON_Stage1_CulturalSurveys - Figure 2.mxd

Military Relocation PA Memo Comment Form

2021

If submitting via **e-mail**, scan and send to: criwebcomment@navy.mil

If submitting via **postal mail**, send to:

Attn: CRI Web Comments
Code EV23, NAVFAC Pacific
258 Makalapa Drive, Suite 100
JBPHH, Hawaii 96860-3134

Submitted comments will be posted on the Navy's Cultural Resources Information (CRI) web site. Information presented on the CRI web site is considered public. The sections highlighted in **red** are required to be completed in order for a comment to be posted.

Privacy Act Statement

Personal information will only be used to contact you regarding the comments you submit. This information will only be shared with another government agency if your inquiry relates to that agency, or as otherwise required by law. We will not create individual profiles or give your information to any private organization. While you must provide a valid e-mail address or postal address, please **DO NOT** include personally identifying information such as a social security number.

By submitting this comment form, you agree not to include content that is offensive in nature, such as profanity, personal attacks on individuals, and racist or abusive language.

PROJECT: P-305 Marine 4th Regiment Facilities; P-306 Combat Logistics Battalion – 4 Facilities; P-307 Consolidated Armory Facility; P-310 Infantry Battalion Company Headquarters; P-314 Marine Expeditionary Brigade; P-326 Primary End Item Warehouse; P-802 General Support Base Warehouse; P-803 Individual Combat Skill Training Area, Naval Base Guam Telecommunications Site, Finegayan, Guam.

SUBJECT: PA Memo#1

Date: _____

Name: _____

CRI User Name (if you don't want your real name to be posted with your comment on the CRI web site):

E-Mail Address: _____

and/or

Postal Mail Address: _____

COMMENTS: _____
