



Naval Facilities Engineering Command, Pacific  
 258 Makalapa Drive  
 Suite 100  
 Pearl Harbor, HI 96860-3134

**MILITARY RELOCATION TO GUAM AND CNMI  
 PROGRAMMATIC AGREEMENT (PA) MEMO #1**

<p><b>Projects:</b> J-031, J-033, and P-459 - Bachelor Enlisted Quarters; P-311 – Central Fuel Station; and P-804 – Central Issue Facility at Naval Base Guam, Finegayan</p>	<p><b>Date:</b> July 8, 2019 <b>Comment Period Open Until:</b> August 22, 2019</p>
<p><b>Project Location:</b> Naval Base Guam, Finegayan, Guam</p>	<p><b>Prepared By:</b> NAVFAC Pacific</p>

**PROJECT SUMMARY:**

This project is for proposed “vertical” construction, to conduct design studies and subsequently build bachelor enlisted quarters (BEQ) and associated improvements within the United States Marine Corps (USMC) Main Cantonment at US Naval Base Guam, Finegayan. The project location previously underwent mitigation for the J-001B Utilities and Site Improvements (U&SI) “horizontal” project. The J-001B U&SI consist of roads, drainage systems, water, wastewater, electrical, communications, security fencing, as well as earthwork activities such as vegetation clearance, grading, cutting/and filling. The existing site will be open and clear of vegetation. The Area of Potential Effect (APE) for this project is depicted on Figure 1.

The project design is three (3) separate BEQ facilities (J-031, J-033, and P-459), a central fuel station (P-311), and a central issue facility (P-804). Project design efforts include existing LIDAR and finished contours, geotechnical surveys, possible sediments investigations, and possible munitions of explosive concern (MEC) removal. These tasks may require geotechnical borings of varying depths, mechanized excavation, placement of survey markers, and other ground disturbing activities.

Site preparation includes earthwork and probing and grouting of subsurface voids. Special foundation features include drilled concrete piles. Paving and site improvements include landscaping, fire lane, parking, LID features (bio retention basins, bio-swales and other infiltration systems), pavilions, sidewalks, curbs and gutters, a trash enclosure, bollards, and signage.

Each BEQ consists of a six-story tower of reinforced concrete to accommodate 300 rooms, a community core building, utility building, a wash down and drying area, a pavilion, and a horseshoe pit. One BEQ facility (J-031) will have a sand volleyball court while another (J-033) will have a basketball court. Site work for the BEQs will include three (3) parking lots, sidewalks, fire lanes and a trash enclosure.

**1** This PA Memo is required by Stipulation IV.E.2.a. of the PA as a means for interested members of the public to provide comments on the identification and evaluation of historic properties. Stipulation IV.E.1.b. of the PA requires the DoD to take into account comments received within 45 days of the date of the delivery of this PA memo to the SHPO and public notification via the CRI website.

The proposed central issue facility (P-804) is a low rise concrete structure with an asphalt concrete apron, parking, access road, concrete sidewalks, fencing and gates, trash/recycling enclosures, a grass swale, utility (water, electricity, waste & storm water) infrastructure, and landscaping. The central fuel station will consist of a fuel operations building, generator building, multi-outlet fuel filling station with canopy and a tank/truck filling station. Additionally, the central fuel station will have fencing and gates as well as a detention basin. The fuel filling station canopy will be constructed with a reinforced concrete roof slab and beams supported by concrete columns and shallow spread footings. The fuel operations building and generator building will be constructed with reinforced concrete roof slab and beams supported by concrete load bearing walls and shallow continuous wall footings. A concrete fuel operations building would hold office space, a fuel laboratory, and storage area. There will be a generator building constructed of concrete to house the permanent generator for emergency power to the fuel facility and administration building.

Facility components include reinforced concrete such as, exterior walls, flooring, foundation, windows, roofing, mechanical, electrical, and informational systems appropriate to Guam earthquake and environmental conditions, and designed to meet applicable Unified Facility Criteria (UFC).

Electrical Utilities include primary and secondary electrical distribution systems, transformer, telecommunications distribution system, and area lighting. Mechanical utilities include water distribution system, sanitary sewer system, oil-water separator, and storm sewer systems.

Demolition work will consist of demolishing existing concrete walkways and a portion of the asphalt roadways to provide driveway entrances. Ground improvements will include a drainage system consistent with the Guam Master Plan and the storm water pollution prevention plan.

This project was identified after preparation of the Final Environmental Impact Study (FEIS) for the military relocation to Guam and the Commonwealth of the Northern Mariana Islands (CNMI) and Appendix E under various projects of the 2011 Programmatic Agreement (PA). In accordance with Stipulation I.E. of the PA, it is a new project associated with the Guam and CNMI Military Relocation (the Undertaking). Pursuant to Stipulation V.B., this PA Memo presents information to allow the public to provide comments on the Department of Defense's (DoD) identification and evaluation of historic properties within the project's Area of Potential Effect (APE), as well as the DoD's determination of effect.

**PROJECT LOCATION:**

The J-031, J-033, P-311, P-459, and P-804 projects are all located within the USMC Main Cantonment at US Naval Base Guam. The base occupies a mostly flat, uplifted limestone plateau in the northern portion of the island of Guam. The majority of the interior of the island is comprised of Mariana Limestone. The project location was previously cleared of vegetation through the J-001B project.

2 This PA Memo is required by Stipulation IV.E.2.a. of the PA as a means for interested members of the public to provide comments on the identification and evaluation of historic properties. Stipulation IV.E.1.b. of the PA requires the DoD to take into account comments received within 45 days of the date of the delivery of this PA memo to the SHPO and public notification via the CRI website.

The total APE for J-013, J-033, P-311, P-459, and P-804 is 12.18 hectares (30.1 acres).

## **IDENTIFICATION OF HISTORIC PROPERTIES:**

### **Identification Efforts**

In planning for the Undertaking, the Department of Defense (DoD) first conducted a data gap analysis to determine the need for supplemental identification and evaluation surveys and then conducted those surveys. This proposed project was determined to require supplemental identification and evaluation efforts, and the results have been applied to the siting/lay down of the proposed project.

DoD surveys and evaluations have focused on project-specific APEs, defined consistent with 36 CFR §800.16(d) to include those portions of the island of Guam subject to direct and indirect effects of projects included in the Undertaking. Both architectural and archaeological assessments have been completed.

More specifically, the APE for J-031, J-033, P-311, P-459, and P-804 has been subject to one or more of the historic property identification efforts listed in 36 CFR §800.4(b)(1), which may include background research, consultation, oral history interviews, sample field investigation and field survey. As such, results of identification and evaluation efforts in the vicinity of, and including the APEs for the five projects can be found in the following original studies of cultural and/or historic resources (Figure 2):

Athens, J.S.

*2009 Final Archaeological Surveys and Cultural Resources Studies on Guam and the Commonwealth of the Northern Mariana Islands in Support of the Joint Guam Build-Up Environmental Impact Statement Volume I: Guam.* Prepared by International Archaeological Research Institute, Inc. Honolulu, Hawai'i.

Church, M., J. Hokanson, J. Gallison, and M. Jennings

*2009 Cultural Resources Survey of 297 Acres at Andersen Air Force Base, Guam.* Prepared for Andersen Air Force Base, Guam by engineering-environmental Management, Inc., Englewood, Colorado. June.

Dixon, B., S. Walker, and M. Carson

*2011 Cultural Resource Investigations Conducted in the Territory of Guam Supporting the Joint Guam Build-Up Environmental Impact Statement: Final Archaeological Surveys on Guam 2008-2009 at Air Force Barrigada, Proposed Live Fire Training Range, Andersen South, and Naval Base Guam.* Prepared for Naval Facilities Engineering Command, Pacific Division, by TEC Inc.

- 3** This PA Memo is required by Stipulation IV.E.2.a. of the PA as a means for interested members of the public to provide comments on the identification and evaluation of historic properties. Stipulation IV.E.1.b. of the PA requires the DoD to take into account comments received within 45 days of the date of the delivery of this PA memo to the SHPO and public notification via the CRI website.

Dixon, B. and S. Walker

2011 *Cultural Resource Investigations Conducted in the Territory of Guam Supporting the Joint Guam Build-Up Environmental Impact Statement: Final Archaeological Surveys on Guam 2009 at Proposed Utility Sites, Harmon Property, and Andersen AFB*. Prepared for Naval Facilities Engineering Command, Pacific Division, by TEC Inc.

Dixon, B., T. Rudolph, A Jalandoni, I. Nelson, M. Hroncich-Conner, S. Leary, R. Schaefer, E. Lash, and M. Todd

2015a *Final Technical Report Proposed Guam and CNMI Military Relocation 2012 Roadmap Adjustments SEIS Live-Fire Training Range Complex Footprints, Main Cantonment, Utilities, Communications, Well Field Alternatives and Access Route Options Volume I: Potential Direct Impact Area In-Fill Cultural Resources Study Narrative*. Prepared for Naval Facilities Engineering Command Pacific by Cardno TEC, Inc., Honolulu, Hawaii, June.

2015b *Final Technical Report Proposed Guam and CNMI Military Relocation 2012 Roadmap Adjustments SEIS Live-Fire Training Range Complex Surface Danger Zone (SDZ) Alternatives Volumen I: Potential Indirect Impact Area In-Fill Culture Resource Study Narrative*. Prepared for Naval Facilities Engineering Command Pacific by Cardno TEC, Inc., Honolulu, Hawaii. June.

Dixon, B., D. Welch, T. Rudolph, R. Jones, and I. Nelson

2018 *Final Technical Report: Archaeological Data Recovery in Support of the J-0001B Utilities and Site Improvements at Naval Base, Guam Telecommunications Site, Guam*. Prepared for Naval Facilities Engineering Command, Pacific Division, by TEC Inc. and the University of Guam. (GIS data labeled 2017)

Haun, A.E.

1988 *Archaeological Reconnaissance Survey and Field Inspections of Relocatable Over-the-Horizon Radar Sites on Guam, Mariana Islands, Micronesia*. Prepared for Wilson Okimoto and Associates, Inc. Prepared by Paul H. Rosendahl, PhD, Inc., Hilo.

Kurashina, H., T McGrath, and H. Manner

1986 *Archaeological Surveys of Areas 1, 2, 1-A, and 2-A at Northwest Field, Andersen Air Force Base and Naval Communication Area Master Station Western Pacific, Finegayan, Guam, Marianas Islands*. Prepared for Naval Facilities Engineering Command, Pacific.

Welch, D.

2010 *Archaeological Survey and Cultural Resource Studies Conducted in 2007 on the Island of Guam in Support of the Joint Guam Build-Up Environmental Impact Statement*. 2 volumes. Prepared for the Department of the Navy, Pacific Division, Naval Facilities

4 | This PA Memo is required by Stipulation IV.E.2.a. of the PA as a means for interested members of the public to provide comments on the identification and evaluation of historic properties. Stipulation IV.E.1.b. of the PA requires the DoD to take into account comments received within 45 days of the date of the delivery of this PA memo to the SHPO and public notification via the CRI website.

Engineering Command, Pearl Harbor, Hawai'i. International Archaeological Research Institute, Inc., Honolulu.

Results of the above identification efforts indicate that seven former historic properties were located within the vicinity of the APE (Site 66-08-1350, 66-08-2303, 66-08-2305, 66-08-2307, 66-08-2308, 66-08-2309, 66-08-2804). These sites underwent mitigation previously for the J-001B U&SI project (see Dixon et al. 2018), and, as a result, these sites are no longer physically present.

Additionally, two sites were inadvertently discovered during recent archaeological monitoring of initial ground disturbing activities associated with J-001B. Site 1 was identified within the J-033/P-459 APE and underwent mitigation in the form of data recovery investigations. Research documented burnt soil with evidence of charcoal, burnt organic material, and burnt limestone indicative of a resource processing area with underground earth ovens.

Site 2 was subsequently documented northeast of Site 1 during current/ongoing monitoring activities. This site will also be mitigated through full data recovery level efforts. In accordance with the 2018 Agreement, the Department of the Navy (DON) notifies the Guam SHPO of any new discoveries and evaluates these discoveries to assess potential affects. Additionally, the DON consults with the SHPO on appropriate plans to resolve adverse effects if eligible sites are found through monitoring.

In accordance with Stipulation VI.F. of the PA, the DoD has retained a full-time Archaeologist to provide site checks, oversee coordination and execution of the archaeological mitigation measures in the PA and to provide quality control. This individual is on-staff at Marine Corps Activity Guam, Public Works Department, and is also designated to respond to and report any inadvertent discoveries to the Signatories, Invited Signatories, and Concurring Parties per Stipulation XII of the PA.

**DETERMINATION OF EFFECT:**

No historic properties are extant in the APE, as the above mentioned sites were previously mitigated through a separate project. Therefore, the DoD has determined that this project will have no historic properties affected. PA Memo #2 will not be required as no mitigation efforts will be necessary.

---

5 This PA Memo is required by Stipulation IV.E.2.a. of the PA as a means for interested members of the public to provide comments on the identification and evaluation of historic properties. Stipulation IV.E.1.b. of the PA requires the DoD to take into account comments received within 45 days of the date of the delivery of this PA memo to the SHPO and public notification via the CRI website.

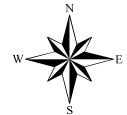
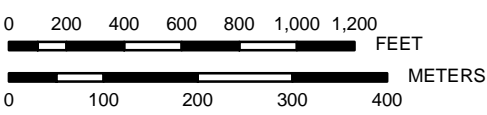


# FIGURE 1



Date: 6/19/2019 Time: 3:46:39 PM Path: C:\Users\laaron.pulliam\Documents\GIS Projects\NBGTS\Finegayan\J031\_J033\_P311\_P459\_P804\PA\_Memo\_Finegayan\_J031\_J033\_P311\_P459\_P804\_GSHPO - Figure 3.mxd

### J-031, J-033, P-311, P-459, and P-804 at NBGTS Finegayan - Construction Area



PREPARED BY:  
 Naval Facilities Engineering Command Pacific Division  
 Guam Program Management Office  
 DATE: 19 Jun 2019



Coordinate System: UTM Zone 55 North  
 Projection: Transverse Mercator  
 Datum: D WGS 1984

### Legend

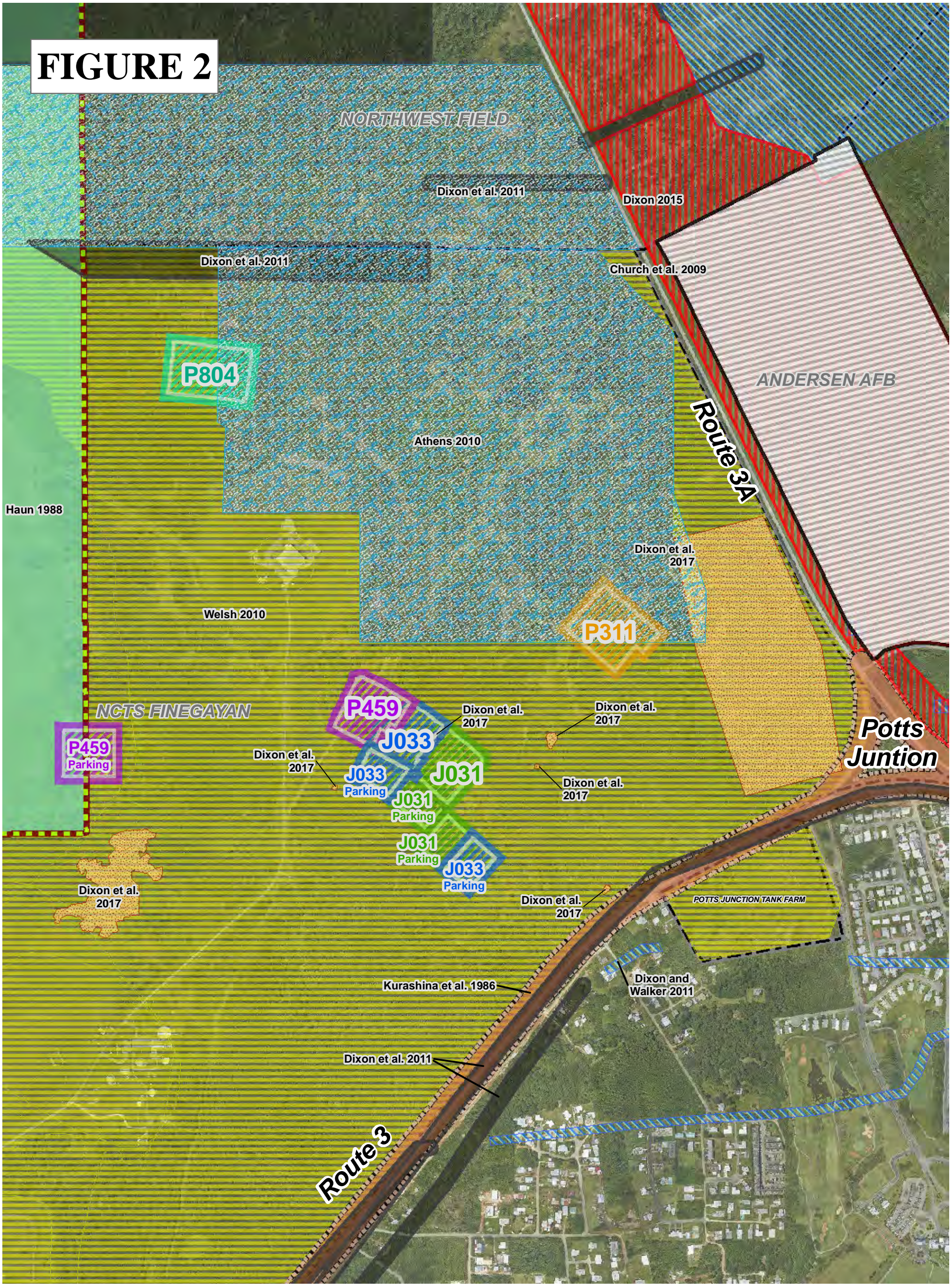
- J-031 (BEQ\*) Project Area
- J-033 (BEQ\*) Project Area
- P-311 (Central Fuel Station) Project Area
- P-459 (BEQ\*) Project Area
- P-804 (Central Issue Facility) Project Area
- J-001B (U&S) Construction
- Military Installations

**Total APE Area** \* Bachelor Enlisted Quarters  
**J-031 = 7.6 Acres; J-033 = 6.1 Acres; P-311 = 4.8 Acres**  
**P-459 = 6.5 Acres; P-804 = 5.1 Acres**

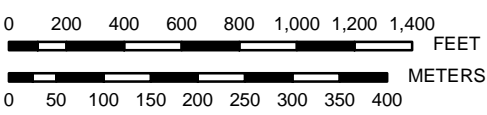




# FIGURE 2



### J-031, J-033, P-311, P-459, and P-804 at NBGTS Finegayan - Survey Areas



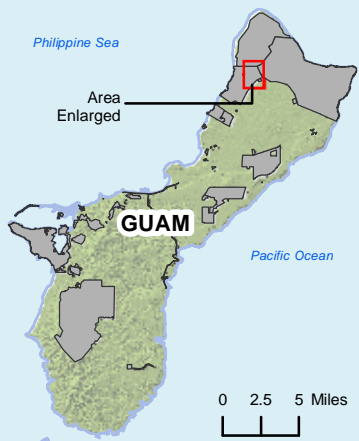
PREPARED BY:  
 Naval Facilities Engineering Command Pacific Division  
 Guam Program Management Office  
 DATE: 19 Jun 2019



Coordinate System: UTM Zone 55 North  
 Projection: Transverse Mercator  
 Datum: D WGS 1984

### Legend

- |                           |   |   |
|---------------------------|---|---|
| J-031 (BEQ*) Project Area | P-311 (Central Fuel Station) Project Area | P-804 (Central Issue Facility) Project Area |
| J-033 (BEQ*) Project Area | P-459 (BEQ*) Project Area                 | J-001B (U&SI) Construction                  |
| Cultural Survey Areas     | Dixon et al. 2011                         | Dixon et al. 2017                           |
| Athens 2009               | Haun 1988                                 | Kurashina et al. 1986                       |
| Church et al. 2009        | Welch 2010                                | Dixon and Walker 2011                       |
| Dixon 2015                |   |   |



Date: 6/19/2019 Time: 3:48:17 PM Path: C:\Users\laaron.pulliam\Documents\GIS\Projects\MXDs\Finegayan\NCTSFinegayan\J031\_J033\_P311\_P459\_P804\_CulturalSurveys - Figure 2.mxd



If submitting via **e-mail**, scan and send to: [criwebcomment@navy.mil](mailto:criwebcomment@navy.mil)

If submitting via **postal mail**, send to:

Attn: CRI Web Comments  
Code EV23, NAVFAC Pacific  
258 Makalapa Drive, Suite 100  
JBPHH, Hawaii 96860-3134

Submitted comments will be posted on the Navy's Cultural Resources Information (CRI) web site. Information presented on the CRI web site is considered public. The sections outlined in **red** are required to be completed in order for a comment to be posted.

**Privacy Act Statement**

Personal information will only be used to contact you regarding the comments you submit. This information will only be shared with another government agency if your inquiry relates to that agency, or as otherwise required by law. We will not create individual profiles or give your information to any private organization. While you must provide a valid e-mail address or postal address, please **DO NOT** include personally identifying information such as a social security number.

By submitting this comment form, you agree not to include content that is offensive in nature, such as profanity, personal attacks on individuals, and racist or abusive language.

**PROJECT:** J-031, J-033, and P-459 Bachelor Enlisted Quarters, P-311 Central Fuel Station, and P-804 Central

Issue Facility at Naval Base Guam - PA Memo #1

**SUBJECT:** J-031, J-033, and P-459 bachelor Enlisted Quarters, P-311 Central Fuel Station, and P-804 Central Issue Facility at Naval Base Guam - PA Memo #1

**Date:** \_\_\_\_\_

**Name:** \_\_\_\_\_

**CRI User Name** (if you don't want your real name to be posted with your comment on the CRI web site):

\_\_\_\_\_

**E-Mail Address:** \_\_\_\_\_

**and/or**

**Postal Mail Address:** \_\_\_\_\_

**COMMENTS:** \_\_\_\_\_

\_\_\_\_\_

\_\_\_\_\_

\_\_\_\_\_

\_\_\_\_\_



