



**Military Relocation 2011 Programmatic Agreement
Semi-Annual Report**

January 1 – June 30, 2025



*GHPI site 66-07-1637 Tarague Chamoru Trail site (AAFB) documented for listing
in the National Register of Historic Places*

**Prepared by Marine Corps Base Camp Blaz
Public Works Department**

February 2026

Section I shall include a list of all individual projects (as identified in Stipulation V.A) completed within the six-month reporting period that were determined to qualify for findings of No Historic Properties Affected or No Adverse Effect on Historic Properties. This list shall include the date of approval by the CRM and description of the project scope.

- **J-200-II Telecommunications Line—Construction (RC# 2020-0702)**
 The project proposes to construct telecommunications infrastructure at Andersen Air Force Base (AAFB). Site preparation consists of clearing and grubbing, temporary erosion and sediment control, and laydown areas for construction.

 - 11/22/2024: PA Memo #1 submitted; No Adverse Effects to Historic Properties.
 - 11/25/2024: SHPO concurred
 - 01/06/2025: PA Memo closed with no public comments.

- **P-411 Youth Center, Andersen Air Force Base (RC# 2025-0151)**

 - The project proposes the construction of a low-rise School Age Care facility attached to and structurally independent from an existing youth center facility at AAFB. The facility will include child development spaces, core administration, staff support, facility support, and outdoor activity spaces. This project also proposes utility infrastructure, paving, parking and grounds improvements.
 - 1/24/2025: PA Memo #1 submitted: No Historic Properties Affected
 - 1/30/2025: SHPO concurred.

- **J-017-V Waterline Interconnect – Construction (RC# 2007-0782)**

 - The project proposes the construction of interconnected waterline and upgrades to an existing pump facility, a potential new pump facility, and potable water mains to connect existing water wells and a water tank in support of water infrastructure at Marine Corps Base Camp Blaz (MCBCB).
 - 4/25/2025: PA Memo #1 submitted: No Historic Properties Affected
 - 4/29/2025: SHPO concurred.

Section II shall include a list of all individual projects (Stipulation V.A.) completed within the six-month reporting period for which supplemental consultation under this PA has been conducted, including the determination of effect and any mitigation measures identified.

P-187 Construction of Exclusion Barrier South, MCBCB Forest Enhancement (RC# 2022-0013)
<ul style="list-style-type: none"> • 6/25/2025: MCBCB notified SHPO and ACHP of P-187-003, a potentially significant site discovered during archaeological monitoring of vegetation clearing. MCBCB concurrently submitted a draft plan of action to resolve adverse effects. • 6/30/2025: MCBCB received SHPO response to the draft plan of action and recommended that the discovery be excavated to bedrock so radiocarbon and artifact data can be analyzed and collected.

P-735 Live Fire Training Range Complex Range (LFTRC) - Mitigation Plan (RMP) for (RC# 2012-10751)

- 03/15/2024: MCBCB submitted to SHPO the base line assessment (dated March 8, 2024) for pre-operational observations (RMP Stipulation III.B) for selected sites (a rock shelter, a Ritidian Complex cave site, and an artifact scatter).
 - 03/18/2024: MCBCB received response from SHPO (dated March 18, 2024). Comments focused on acoustic-related damage, moisture flow, algal growth, and impacts to bird nesting and bioclasty, as well effects of construction and future management on rainfall patterns.
 - 05/20/2024: MCBCB submitted a response to SHPO (dated May 19, 2024), referring to the Final Supplemental Environmental Impact Statement (FSEIS; NAVFAC PAC, 2015) and Guam Training Ranges Review and Analysis (TRRA; NAVFAC PAC, 2019) that addressed these issues.
 - 06/10/2024: MCBCB received a response from SHPO (dated 06/06/2024) seeking explanation of algae observed on the interior of a Ritidian Complex cave site (Star Cave), which is not in the RMP Baseline Assessment report.
 - 04/30/2025: MCBCB responded to SHPO's comment with a reminder that Star Cave is not in the Mitigation Plan Baseline Assessment and only included in the RMP for acoustic considerations. It was determined the acoustics are comparable to ambient sound. Furthermore, photos provided by the June SHPO letter exhibit the site conditions in 2017, not the previous year as noted in the SHPO letter.
 - 05/06/2025: MCBCB received SHPO response regarding the potential indirect impacts to Ritidian caves and proposed weather and moisture monitoring and discharge studies to observe potential impacts of infiltration that may contribute to the degradation of the rock art.

Long-Term Forest Enhancement Sites (FES) Activities (RC# 2021-0952)

- 4/1/2025: SHPO and ACHP were notified of KLF-TF-001, a pottery scatter, discovered during re-clearing of vegetation along the main irrigation line for the Caguat Forest Enhancement Site. A draft plan of action was provided to both agencies to mitigate a discovery that cannot be avoided.
 - 4/03/2025: SHPO concurred with MCBCB's draft plan of action.
- 4/17/2025: Archaeological Monitoring report in support of Long-Term Forest Enhancement Activities, Caguat FES submitted to SHPO.
 - 4/23/2025: SHPO concurred.

J-001B Utilities and Sites Improvements (RC# 2014-0625)

- 2/11/2025: End of Fieldwork letter submitted to SHPO for "J-001B Area D", where HR-11, HR-12, HR-20, HR-22, and HR-25 are located. MCBCB recommended release of the J-001B Area D to P-325 Engineering Support Battalion Facility construction project in order to begin landscaping, fence, and plaque installation commitments per the Amendment to JRM-SHPO *Sabãnan* Fadang Burial Treatment Plan (2 June 2024).
 - 2/11/2025: SHPO concurred with MCBCB's recommendation.

Section III shall include any additional coordination under this PA initiated (Stipulations I.D and I.E) within the past six months as a result of changes or additions to the Undertaking. DoD shall provide a summary showing the project name, date of adverse effect notification and status of consultation.

- None for this reporting period

Section IV will provide a summary of progress on the implementation of mitigation measures specified in Stipulations VI, VII and VIII

Stipulation VI.A.1: Mitigation Plans
<ul style="list-style-type: none"> • 2/14/2025: Proposed monument design and landscape plan for P-325 (J-001B Area D burials) submitted to SHPO for review. <ul style="list-style-type: none"> ○ 2/20/2025: Additional documentation (proposed landscaping contour map) provided to SHPO, per phone call received from SHPO staff on 2/18/2025. ○ 2/20/2025: SHPO concurred with proposed monument design and landscape plan.

Stipulation VI.A.2: Data Recovery Reports
<ul style="list-style-type: none"> • None during the reporting period

Stipulation VI.B: Public Education and Interpretation
<ul style="list-style-type: none"> • No additional educational booklets were produced during the reporting period. Digital copies of existing booklets can be obtained from the Navy Cultural Resources Information website (https://pacific.navfac.navy.mil/About-Us/Cultural-Resources-Information/). When you reach the website, click “About Us” to access Cultural Resource information, including opportunities to comment on PA Memos.

Stipulation VI.D.1: Cultural Resource (CR) Awareness
<ul style="list-style-type: none"> • Approximately 2,367 contractors received CR training between January to June 2025

Stipulation VI.D.2: Access to Historic Properties on DoD Lands
<ul style="list-style-type: none"> • The Public Access Plan was suspended during the height of COVID. It was overhauled to provide a more robust program headed by a full-time coordinator. • Note that the sites on NBGMS, particularly sites with latte sets, are among the best preserved on the island. • The PAP was paused on May 31, 2025 due to staffing issues related to the federally-mandated hiring freeze. • See Section VIII for more information about the Public Access Plan for this reporting period.

Stipulation VI.F: Professional Oversight

- Camp Blaz archeologists consult regularly with Naval Base Guam and Andersen Air Force Base Cultural Resource Managers (CRM) and with the Joint Region Marianas CRM to ensure oversight of actions and mitigations related to the Marine Corps Relocation. Camp Blaz archeologists are also in consultation with Naval Facilities Engineering Systems Pacific (NAVFAC PAC) archeologists by phone or email daily.
- Camp Blaz archeologists conduct site visits to inspect progress, respond to contractor requests for information and report to the Contract Officer’s Representative on any issues.
- Camp Blaz archeologists communicate with the Guam SHPO and the Guam State Archaeologist regarding discoveries and requests for information.
- At Camp Blaz, there are currently three Secretary of the Interior (SOI) qualified archeologists: the Cultural Resources Manager (CRM; GS-12), an Archeologist (GS-12), and an Archeologist (GS-11).

Stipulation VI.G: Update of Historic Properties Information

- Contracts for archeological investigations, whether for surveys or data recovery, require that the contractor prepare a new or updated (as appropriate) Guam Historic Property Inventory (GHPI) form for the property and include evaluation for National Register Criteria for listing to the National Register of Historic Places (NRHP).
- 1/24/2025: Updated GHPI forms for Sites 66-08-2522, 66-08-2856, 66-08-2857, 66-08-3010, 66-08-3011, 66-08-3012, 66-08-3013, and 66-08-3014 submitted to the SHPO.
 - 2/3/2025: SHPO accepted updated GHPI forms and requested GIS files for the sites
 - 2/4/2025: MCBCB provided GIS data as per SHPO’s request

Guam-Specific Mitigations (Stipulation VII)

Stipulation VII.B.1: Signage at South Finegayan

- While military Relocation action (housing construction) is no longer proposed at South Finegayan, the requirement to update the interpretive signage at the South Finegayan Latte Stone Park remains a requirement per the 2011 PA.
- Plans for the interpretive signage and rehabilitation of the area around the latte set including removal of dead trees, grass cutting, etc., have been completed and submitted for approval.
 - The interpretive signage will incorporate information obtained during a 2016 NBG investigation of the features around the standing latte set
 - There is also opportunity to manage this requirement with other interpretive needs or initiatives beyond the 2011 PA
 - Currently, available funding is limited to the signage update in the 2011 PA
 - Additional funding is being sought to support the larger rehabilitation of the park.
- Access to South Finegayan is currently restricted due to military use of the area; however, opportunities for visiting the latte park will be available in the future, subject to application through the Public Access Plan.

Stipulation VII.B.2: Maintain Access to Southern Mountain Trail

- There have been no actions restricting access to the Southern Mountain Trail.

Stipulation VII.C.2: Assist SHPO with Update of Guam Historic Preservation Plan

- Requirement is for DoD to support SHPO’s Guam Historic Preservation Plan (HPP) in accordance with SOI Standards and Guidelines for Preservation Planning as part of its five-year planning cycle and continue to do so every 5 years for the life of this agreement
- SHPO is completing the HPP and anticipates printing soon.

Stipulation VII.C.2: Prepare/Update Stand-alone Guam Synthesis

- Requirement is to support the Guam Historic Preservation Plan by producing a stand-alone synthesis of inventory and evaluation efforts.
- The initial Synthesis, published in 2019, consisted of a two-volume set that started after Guam SHPO completed the Historic Preservation Plan in 2018.
- The Synthesis update was awarded 28 July 2022 and will provide an opportunity to include new information from military relocation investigations, particularly those on the Northern Plateau. Several improvements have been incorporated in response to comments received:
 - Updated GIS component
 - Increased collaboration with Guam SHPO
 - Public versions of the Synthesis
 - Interpretive component that includes an interpretive booklet and portable display kit with lesson plans for presentations
- 3/7/2023: MCBCB submitted draft work plan for the preparation of a Synthesis of Historic Property Inventory and Evaluation Efforts on Guam (Guam Synthesis)
 - 5/3/2023: Guam SHPO provided comments
- NAVFAC PAC and Camp Blaz met with Guam SHPO to discuss the timeline to incorporate on-going projects in the Guam Synthesis. All parties in agreement to incorporate these projects into the report with an estimated completion by the end of the 2025 calendar year.
- Research is ongoing: collection of new data since initial 2019 publication

Stipulation VII.C.3: National Register of Historic Places (NRHP) Nominations

This stipulation requires that DoD prepare at least two NRHP nominations per year for historic properties on DoD land.

- 01/24/2025: MCBCB submitted to SHPO proposed traditional name for GHPI Site 66-08-1051 (Tweed’s Cave). In collaboration with Artero and Tweed Families, MCBCB recommended the name “Liheng Tweed gi Lancho’n Artero”. SHPO concurred with traditional name
- 01/30/2025: MCBCB submitted for SHPO review draft NRHP nomination of the Old Bridge at Navy Base Guam Naval Munitions Site
 - 01/31/2025: MCBCB received SHPO’s review comments with recommendations to the draft NRHP form

Table 1. STATUS OF NRHP NOMINATIONS AS OF DECEMBER 31, 2022 (*have Brochure/Pamphlet)

Calendar Year	Property Name	Status
2012	Talisay (66-02-2366)*, Latte set, NBG Naval Munitions Site	Listed in NRHP
2012	Tumon-Maui Well (66-01-2278)*, AAFB Andersen Water Supply Annex	Listed in NRHP
SHPO	Mahlac Pictograph Cave (66-02-1985) *, NBG Naval Munitions Site	Listed in NRHP
2013	Dobo Springs Latte Set Complex (66-02-0151)*, NBG Naval Munitions Site	Listed in NRHP
2013	North Field AAFB (66-07-1064)*, NBG	Prepared by NAVFAC PAC and NAVFAC Marianas at AAFB CRM recommendation. Nomination was ultimately rejected by AAFB leadership.
2014	Dãdi Beach Defensive Bunker (66-02-1303)*, NBG	Listed in NRHP
2014	Pãpa'etnon (66-02-2330)*, NBG Naval Munitions Site	Pending routing through JRM
2015	Maulap River Complex (66-02-1978)*, NBG Naval Munitions Site	Keeper returned nomination with minor comments. MCBCB revising for resubmission.
2015	Sagãyan Atmagosa (66-02-2337)*, NBG Naval Munitions Site	Pending routing through JRM
2016	Torres Farmstead (66-08-2717)*, AAFB	Pending routing through JRM
2016	Tarague Well #4 (66-07-1586)*, AAFB	Pending routing through JRM
2017	Songsong Mã'gas (66-09-1935) & Guekon Yu'us (66-09-1940), NBG Naval Munitions Site	Pending routing through JRM
2018	Fansagayan Man Mo'na na Taotao Tagua' (66-07-1588), AAFB	Pending routing through JRM
2018	Liyang Talagi, Bokungo' (66-08-1515), AAFB	Pending routing through JRM
2018	Liyang Fanliheng (66-08-1516), AAFB	Pending routing through JRM
2019	Pugua Point District (66-08-0008), proposed by SHPO, MCBCB	Pending routing through JRM
2019	Pugua Point Site 13 (66-08-2774), proposed by SHPO, MCBCB	Pending routing through JRM
2019	Vietnam-Era Conference Table (66-01-2964), constructed for March 1967 conference (US and South Vietnam civilian and military leaders), NBG Nimitz Hill	Pending routing through JRM
2020	Almagosa Springs I (66-02-2339), single latte set with associated rock shelter, NBG Naval Munitions Site	Field work completed in 2021 due to COVID delays. Received Draft Feb 2022; pending internal revisions with Camp Blaz

2020	Almagosa Springs II (66-02-2341), two latte sets and a Spanish component, NBG Naval Munitions Site	Field work completed in 2021 due to COVID delays. Received. Draft Feb 2022; pending internal revisions with Camp Blaz
2020	Almagosa Springs III (66-02-2344), contains two latte sets and two associated quarries, NBG Naval Munitions Site.	Field work completed in 2021 due to COVID delays. Received Draft Feb 2022; pending internal revisions with Camp Blaz
2021	Chandia Ridge Site 42 (66-02-2348), Latte Period site, NBG Naval Munitions Site.	Field work completed in 2021 due to COVID delays. Received Draft Feb 2022; pending internal revisions with Camp Blaz
2021	Chandia Ridge Site 45 (66-02-2350), Latte Period site, NBG Naval Munitions Site	Fieldwork completed; Received Field work completed in 2021 due to COVID delays. Received Draft Feb 2022; pending internal revisions with Camp Blaz
2022	Tarague Village Complex (66-07-1614), Latte Period coastal village at Tarague, AAFB. Part of the *thematic nomination for upland agricultural sites, coastal villages and the network of stone lined paths that connect them in the Tarague Embayment, AAFB	Pending routing through JRM
2022	Tarague Yam Mounds Site (66-07-1637), upland agricultural site. Part of the *thematic nomination, Tarague Embayment, AAFB	Pending routing through JRM
2022	Tarague CHamoru Trail (66-07-1638), well-preserved section of the network of stone-lined path that connect the agricultural sites with coastal villages and fresh water sources; Part of the *thematic nomination, Tarague Embayment, AAFB	Pending routing through JRM
2022	Litekyan Rock shelter (66-08-2492), Pre-Latte to Latte Period Multi-component site, MCBCB Mason LFTRC	Pending routing through JRM
2023	Fena Massacre Site (66-02-1313), includes two caves associated with massacre and assault on July 19, 1944, NBG Naval Munitions Site	Pending routing through JRM
2023	Liheng Tweed gi Lancho'n Artero (66-08-1051), "Tweed's Cave" is a rock fissures used as refuge for First Class Radioman George Tweed between 1941 and 1942, MCBCB	Pending routing through JRM
2023	Fena Lake West (66-02-0145c), Latte set site, NBG Naval Munitions Site	Pending routing through JRM
2024	The Old Bridge (no GHPI. Site Number), one of the only unmodified, pre-war bridges on Guam (likely First American Territorial to Japanese Occupation Periods), NBG Naval Munitions Site	Final nomination package under review by Camp Blaz

Stipulation VII.C.4.a: Cultural Repository Funding

- DON advocated for funding and secured Congressional authorization. Office of Economic Adjustment granted \$12 million to Office of the Governor.
- Construction has been completed on the University of Guam campus.
- The Cultural Repository hosted an Open House presentation on the status of Cultural and Natural Resource Mitigations in January 2023.
- When the facility is staffed and ready to receive collections, JRM will begin transferring collections to the facility.

Note that the facility is intended to house all Guam collections, not just Federal collections.

Stipulation VII.C.4.b: Museum Complex Advocacy

- DON provided a white paper explaining the effort to secure funding and to meet the commitment for advocacy. No federal agency was able to provide funding for a museum complex.

Stipulation VII.D: National Park System on Guam

- No impacts to NPS related to the military relocation have been reported.

Stipulation VIII: Tinian Mitigations

- Tinian mitigations stipulated under the 2011 PA remain inactive.

Stipulation IX: Provide SHPO Liaison

- One SHPO Liaison position was funded through a stand-alone contract.
 - The SOI qualified archeologist on-boarded to the SHPO on 01/16/2024. He was promoted to the dual duty of Acting Guam State Archaeologist on 2/29/2024. His support in these positions is ongoing.
- The Navy voluntarily contracted a liaison that commenced 10/24/2024 to provide support to the SHPO as an Ethnographer and Historian. This is beyond the minimum the 2011 PA requirement that the Navy provide one liaison for not less than 20 hrs per week. Her support is ongoing.

Section V will include a list of projects to be completed in the next reporting period, including the determination of effect and any mitigation measures required.

Note: Projects listed in Section V are anticipated during the next reporting period; however, timing may vary due to scheduling decisions.

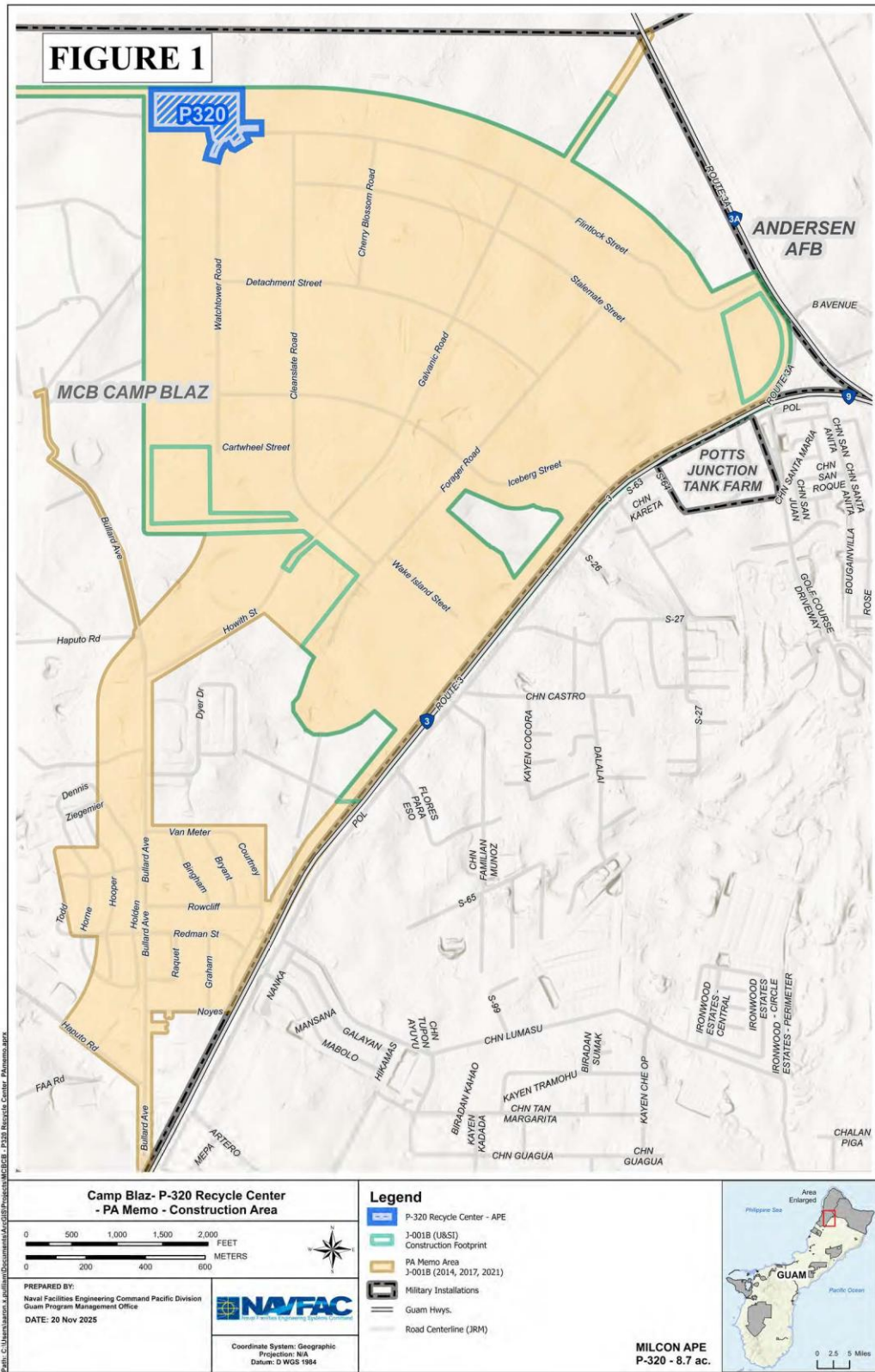
J-402 Outdoor Playing Fields - Construction
<ul style="list-style-type: none">• This project will construct outdoor playing fields consisting of consists of a running track, lighted multipurpose field for soccer and football, a soccer/football multipurpose field without lights, and two lighted softball fields, as well as a restroom facility, a field support building with covered public space concessions, press box, training area, storage, infrastructure, utilities, walkways, and other associated components.• Each softball field will be provided with reinforced concrete dugouts and concrete bench inside of each dugout. The track with multi-purpose field will consist of a synthetic turf surface. The soccer/football multi-purpose field and two softball fields will consist of a natural grass surface.• Efforts include construction preparation such as fine grading and clearing. Other work would involve temporary erosion and sediment control. Site improvements such as paving, retaining walls, and landscaping would be completed.• Based on proposed project area previously being graded to bedrock through archeological monitoring and, therefore, there are no historic properties within the project area, the determination is <u>“No Historic Properties Affected”</u> and there are no mitigations required.

P-320 Recycling Center - Construction
<ul style="list-style-type: none">• This project will construct a multi-use recycling center consisting of a recycling center facility building, solid waste transfer station building, administrative building, parking, operational vehicle loading area, and supporting utilities.• Site preparation efforts include grading and drainage, scarification and re-compaction of subgrade soils, subgrade excavation for drainage swales, bio-retention basin, access driveway, paved laydown area, building foundations and site utilities. Paving and site improvements for this project include pavement for access driveway, operational vehicle laydown area, security fence and gate, landscaping, parking, and other paved areas such as traffic circulation and concrete sidewalks.• Based on proposed project area previously being graded to bedrock through archeological monitoring and, therefore, there are no historic properties within the project area, the determination is <u>“No Historic Properties Affected”</u> and there are no mitigations required.

Section VI shall include maps showing the project areas and DoD project numbers, as well as any portions of the APE where sensitivity designations have been changed as a result of further identification and evaluation efforts.

NOTE: Regarding changes in sensitivity designations, footprints of projects such as J-001B and P-715/735 that were cleared and graded will become low to no probability; however, discoveries made within those areas will be considered when assigning sensitivity designations to locations in similar environments. Revised sensitivity maps are being developed by JRM.

P-320 Recycling Center – Construction



Section VII of this annual report shall include the results of all dispute resolution efforts under Stipulation XIII.

- No new disputes were initiated during the reporting period.

J-001B Utilities and Site Improvements (RC# 2014-0625)

- Archeological monitor continued to provide weekly reports. By the end of this reporting period, monitor schedule was reduced to part time, due to decrease in activities requiring monitoring.
 - Monitor remained on call throughout the reporting period; however, ground disturbances requiring monitoring were not occurring on most days.
 - Monitors assisted in pre- and post-Typhoon Mawar activities to secure and protect HR locations. They also participated in site clean-ups related to the typhoon.
 - Monitor assisted archeological crews working at HR locations.
 - Monitor acted as a liaison between archeological team and GOJV regarding fencing maintenance, measures to protect HR locations from frequent heavy rains, and providing access to areas
 - Monitor assisted Camp Blaz in site preparation for burial ritual
 - Monitoring concluded on Sept 6, 2023.

J-755 Urban Training Complex (Construction Phase) (RC# 2013-1101)

- Archeological Monitoring continues at the Urban Training Complex (UTC) for J-755.
 - Monitors documented and collected a few isolated artifacts as they monitored for the following activities:
 - Assisted in pre- and post-Typhoon Mawar activities to secure and protect HR locations. They also participated in site clean-ups related to the typhoon.
 - Fence installation at various locations
 - Repairs of Protective Fences around locations pending archeological investigations
 - Project P-51 construction monitoring along road within the UTC
 - June 2023: MCBCB notified SHPO that the archeological monitor discovered human skeletal remains fragments HR-16 that were exposed in the root mat of a fallen tree due to Typhoon Mawar. The monitor facilitated and observed the return of the remains to their original position.
 - Monitoring concluded May 22, 2024.

P-715 Live Fire Training Range Complex (RC# 2019-0131)

- Archeological monitoring of P-715 concluded with the completion of construction in 2023.

P-103 Water Well Construction (RC# 2016-0122)

- Construction of the water well field development project is currently underway and is being monitored per the 2018 agreement
- No archeological sites have been defined; however, one possible human bone fragment was discovered (later determined to be non-human); SHPO was informed and the location was fenced pending further investigation.
 - February 2023: Investigation of this location was completed, producing only confirmed deer bones.
- Monitoring continued with weekly, then as-needed inspections during the reporting period.

P-735 Multi-purpose Machine Gun Range (RC# 2019-0053)

- Archeological monitoring was carried out at MCBCB Mason LFTRC (previously referred to as NW Field, AAFB).
 - Monitors are present in the construction area per the 2020 agreement.
 - No new discoveries of sites or HSR were made during this reporting period.
 - Monitor supported erosion from Mawar
 - Monitoring concluded on 06/17/2024.
 - Final results of monitoring submitted to SHPO 01/24/2025. SHPO accepted report 02/03/2025.

Section VIII of this report will provide summary data from Jan 1 through May 31 of this reporting period for public access from the Public Access Plan (PAP). The data presented here is estimated due limited records.

- At least 181 participants in the PAP
- At least 26 visits to archeological and historical sites in the PAP
- Below are details on what sites were visited:
 - Naval Base Guam
 - Almagosa Springs (3 visits) – 31 participants
 - Clippers Landing (4 visits) – 117 participants
 - Dobo Springs (3 visits) – 21 participants
 - East Bonya Latte (1 visits) – 7 participants
 - Gab Gab Beach (1 visit) – 7 participants
 - Japanese Lookout (1 visit) – 7 participants
 - Japanese POW Steps (1 visit) - 7 participants
 - NOB Hill Theater (1 visit) – 7 participants
 - Orote Field (2 visits) – 65 participants
 - Sumay Cemetery (1 visits) – 52 participants
 - Sumay Village (1 visits) – 52 participants
 - War Dog Memorial (3 visits) – 72 participants
 - West Bonya Latte (2 visits) – 17 participants

- Marine Corps Base Camp Blaz
 - Tweed's Cave (1 visit) – 10 participants
 - Latte Stone Park (South Finegayan Latte Site) (1 visit) – 9 Participants
- Three sites are in the process of being added PAP website. MCBCB submitted Memorandum for Record (MFR) to JRM Aug 16, 2023. Proposed sites include:
 - Litekyan Rock Shelter, MCBCB Mason LFTRC (GHPI Site No. 66-08-2492)
 - Mogfog Burial Sites, MCBCB Skaggs UTC
 - Sabånan Fadang Burial Sites, MCBCB Main Cantonment
- Medicinal collections or seed collections from the public during this reporting period: data currently unavailable
- Pieces of High Value Trees delivered during reporting period: data currently unavailable

APPENDICES

- A. Archeological Discoveries
- B. Discoveries of Human Remains

APPENDIX A: TABLE OF ARCHEOLOGICAL SITE DISCOVERIES (POTENTIAL HISTORIC PROPERTIES)

DATE	DISCOVERY AREA	POTENTIAL ARCHEOLOGICAL AREA, DESCRIPTION UPON DISCOVERY All discoveries are fenced/flagged, notifications are sent to appropriate authorities, with construction paused in the immediate vicinity of the archeological find (construction work continues elsewhere).
MILCON P-715		
3/19/2019	P-715-001	Surface scatter of Latte Period ceramics at NE corner of Known Distance Rifle Range (KDRR) discovered during pre-clearing recon of area
5/08/2019	P-715-002	Ca. 400 Latte Period ceramic sherds in stump pull in SE corner of KDRR near a previously data recovered site
6/03/2019	P-715-003	Large surface artifact scatter running SW to NE across KDRR
6/12/2019	P-715-004	Small area with artifact scatter, including <i>lusong</i> (mortar) and 100+ ceramic sherds located in the range road between pistol range and MRFR
7/16/2019	P-715-005	Latte Period ceramic scatter including rim sherds, an extension of a previously data recovered site 66-08-2530 in MRFR
7/29/2019	P-715 Areas 5A and 5B	Areas in SE and SW sides of MRFR. Variety of surface artifacts and dark stains assumed to be indications of subsurface cooking pits
10/15/2019	P-715-006	Possible fire feature, later ruled out
MAMIZU J-001B		
12/05/2018	J-001B-001	Archeological surface scatter and possible cooking pits
1/21/2019	J-001B-002	Archeological surface scatter, stone tools, ceramics suggest potential prehistoric habitation site. Presence of late 19th century bottles and ceramics
5/23/2019	J-001B-003	Immediately adjacent to north and east boundaries of 66-08-2303 (Magua Settlement Site) and are almost certainly part of that sites. Features (probable cooking pits) are visible in both areas
5/29/2019	J-001B-004	
6/03/2019	J-001B-005	Dark soil feature (possible cooking pit) located some distance east and north of 66-08-2303; not geographically part of the Magua site. Included in notification to SHPO for 003 and 004
7/18/2019	J-001B-006	Latte Period ceramic scatter, lithics (stone tools), fire affected soil, metal, glass, boot sole and boar tooth. Geographically distant and north of 66-08-2303.
8/18/2019	J-001B-007	Latte Period ceramics, lithics and fire affected soil (probable indicators of cooking pits). Located between 66-08-2303 and Discovery Area J-001B-006.
10/02/2019	J-001B-008	Latte Period ceramics, lithics, and fire affected soil. Modern glass present on surface.
6/01/2020	J-001B-009	Area E, surface scatter of 50+ latte ceramic sherds, a broken <i>lusong</i> , marine shell (<i>tridacna</i>) and volcanic stone fragments

8/19/2020	J-001B-010	Surface artifact scatter and three soil stains with fire affected limestone pebbles in an area approximately 30 x 80 meters in Area E.
3/31/2021	J-001B-011	More than 20 features within an area of approximately 100 x 150 meters in the western portion of Area D. Several of the features are black soil stains that contain burned coconut shell, fire affected limestone pebbles, and surface artifact scatters.
MAMIZU J-755		
3/19/2020	J-755-001	Latte Period ceramics, stone tools, slingstone in Convoy Vehicle Operator Course (CVOC) at western end of Andy South
3/25/2020	J-755-002	100+ ceramic sherds in 100 X 20 meter part of perimeter fence corridor in southern Andy South
4/02/2020	J-755-003	Latte Period ceramic scatter and surface stain that may represent combustion feature (CVOC)
5/01/2020	J-755-004	30-40 ceramic sherds, slingstone, pestle and indeterminate lithic fragments (CVOC)
5/04/2020	J-755-005	Latte Period ceramics, slingstone, stone tool fragments, possible latte elements (CVOC)
5/15/2020	J-755-006	Ca. 90 ceramic sherds, two slingstones, groundstone fragment, two features, faunal and human bone (HSR)
5/19/2020	J-755-007	Ca. 50 ceramic sherds, groundstone fragments, slingstone, marine shell (CVOC)
5/28/2020	J-755-008	Latte ceramics, ground stone fragment and soil stain (CVOC)
6/04/2020	J-755-009	30+ ceramic sherds, ground stone fragments, marine shell, flaked stone tool, soil stain (CVOC)
6/10/2020	J-755-010	Dark soil stains, possible <i>lusong</i> fragment, ground stone tool fragments and ca. 30 ceramic sherds (CVOC)
6/10/2020	J-755-011	25+ ceramic sherds, three soil stains (possible features), ground stone tool fragment and marine shell (possible worked tridacna shell) (CVOC)
7/14/2020	J-755-012	Surface scatter of 80-100 ceramic sherds, 7 groundstone tools or fragments and three soil stains (potential features) were found in an 80 x 120 meter area at the SE edge of the hand grenade range.
8/20/2020	J-755-013	Surface scatter of ceramics and lithics in an area 45 x 75 meters (CVOC)
12/15/2020	J-755-014	Approximately 15x20 meters wide consisting of a surface scatter of Latte Period ceramics, marine shells, lithic tool fragment (CVOC)
6/04/2021	J-755-015	Approximately 50x20 meters wide containing at least 4 soil stain features and surface scatter of multiple artifact classes; located south of CVOC
6/22/2021	J-755-016	Approximately 40x20 meters wide containing 2 thermal features, groundstone, and at least 25 pre-contact ceramic sherds; located south of CVOC
8/03/2021	J-755-017	Width of corridor (20m) by ca 60 meters known size; contains at least two thermal features thought to represent earth oven and ca. 25 ceramic sherds.

8/21/21	J-755-018	Area is approximately 15 meters X 54 meters containing a surface scatter of stone and shell tool fragments, ceramic sherds and a human bone fragment (HR7).
12/08/21	J-755-019	Dark soil stain approximately 20 meters long running along west perimeter fence corridor. Feature contains pre-contact ceramics and ground stone tool fragments. Archeological investigations determined that this dark soil is a secondary deposit; however, a combustion feature was discovered in one of the shovel tests placed in the area.
2/11/2022	J-755-020	12 X 25 meter area in the east perimeter road corridor that contains four concentrations of ceramic sherds and at least three (3) possible combustion features.
3/25/2022	J-755-021	5 X 25 meter area in Road M east of J-755-017. Two soil stains, with fire affected coral and ceramics and human skeletal remains are present.
MILCON P-290		
1/05/2023	P-290-001	Several dark soil stains with a concentration of fire affected coral limestone, Latte Period pottery, and human skeletal remains.
8/28/2023	P-290-002	Several dark soil stains with a concentration of fire affected coral limestone and Latte Period pottery.
9/11/2023	P-290-003	Several dark soil stains with a concentration of fire affected coral limestone and Latte Period pottery.
MILCON P-187		
06/24/2024	P-187-001	At least two cultural features with 1 dark soil stain containing fire-affected limestone and 1 pottery scatter discovered during monitoring
09/03/2024	P-187-002	A 3 x 7 meter area composed of dark soil stain containing fire-affected limestone and several pottery sherds
06/24/2025	P-187-003	A 5 x 7 meter area composed of dark soil stain and pottery sherds
Long-Term Forest Enhancement Sites Activities		
03/27/2025	KLF-TF-001	A pottery scatter containing at least 20 pottery sherds on the surface and another 10 pottery sherds recovered within the root ball of a downed tree within an area at least 3-x-12 meters in size discovered during vegetation removal within an irrigation corridor.
END OF RECORD (July 2025)		

APPENDIX B: DISCOVERIES OF HUMAN REMAINS

J-001B (HR-1 and Area D)
<p>Burials at J-001B Area D HR sites: HR-20, HR-12; HR-11, HR-22, and HR-25 are being preserved in place. Due to the location of HR-13 and HR-24 to these sites, HR-13 and HR-24 will be preserved in place along with the 5 sites with burials.</p> <ul style="list-style-type: none"> • 11/30/2022: MCBCB leadership selected that Course of Action (COA) following the 30 NOV 22 brief. <ul style="list-style-type: none"> ○ 12/14/2022: JRM to confirmed COA following brief. ○ The project redesign to follow will result in those areas plus HR-13 and HR-24 being preserved in place. ○ Planners have already developed a draft revised perimeter fence alignment to exclude those areas from the future 9th ESB compound. Archeological contractor began preparing burials at HR-12 and HR-20 for preservation in place on 12 DEC, completed on 13 JAN and began working the other areas • 7/27/2023: Reburial ceremony held by the SHPO

Discovery Date	Discovery Number	Potential Human Remains Description Upon Discovery	SHPO Formal Notification
PRE-CONSTRUCTION ARCHEOLOGICAL SURVEY AND SUBSURFACE INVESTIGATIONS IN SUPPORT OF J-001B			
N/A	J-001B-site 2303 Initial investigations	Laboratory Analysis Findings Surface collection: 1 fragment adult frontal bone; Trench 1, F26: 3 fragments adult forearm and humerus; Trench 3, F27: 1 long bone shaft fragment	Report Jan 2017
N/A	J-001B-site 2305 initial investigation	Laboratory Analysis Findings F6: 3 forearm and humerus fragments	Report Jan 2017
8/14/2016	J-001B Site 2307	EU1/F1: Field discovery of human clavicle fragment	8/17/2016
N/A	J-001B-Site 2308 initial investigation	Laboratory Analysis Findings F1: 19 adult human long bone fragments	Report Jan 2017
MILCON P-715			
9/20/2019	P-715-HR-1	Splintered fragments of human humerus, disturbed context of cleared area. Initial screening for preliminary investigation concurred on by SHPO to be performed by P-715 sub-contractor archeological firm (in scope under data recovery mod). Preliminary investigation identified 22 fragments of HSR in 1 x 1 meter unit. HSR included cranial fragments, mandible fragment and two teeth.	9/25/2019
9/26/2019	P-715-HR-2	Splintered fragments of human ilium and fibula, disturbed context of cleared area.	9/30/2019

10/02/2019	P-715-HR-3 P-715-HR-4	Two splintered fragments of human tibia, disturbed context of cleared area within same recovery area.	10/9/2019
10/11/2019	P-715-HR-5	Grid AU106: 26 fragments of HSR found, majority cranial fragments with femur and other long bones	10/18/2019
10/15/2019	P-715-HR-6	Grid AM116: three long bone fragments	10/18/2019
10/29/2019	P-715-HR-7	Grid AS112: two long bone fragments	10/30/2019
10/29/2019	P-715-HR-8	Grid AS 110: cranial and long bone fragments, teeth	10/30/2019
11/15/2019	P-715-HR-9	P-715-005B: 2 cm x 2 cm cranial vault fragment with smaller related pieces	11/18/2019
MAMIZU J-001B			
1/09/2020	J-001B-HR-1	Incised tooth was discovered during data recovery in discovery area J- 001B-002. Tooth was found in Grid AG26. Discovery triggered further investigations per procedure agreed upon in consultation with SHPO.	1/24/2020
3/09/2020	J-001B-HR-2	Grid Q20, within 66-08-2303: cranial fragments, fragments of long bones tentatively identified as radius and ulna.	3/12/2020
3/25/2020	J-001B-HR-3	Within 66-08-2303: single small fragment of human cranium on graded surface	4/15/2020 delay due To COVID
5/29/2020	J-001B-HR1-BR1	While following the SOPs, the archeologists encountered an in-situ burial. This was designated as Burial 1. Consultation with SHPO resulted in concurrence to expose, but not remove the remains in an effort to determine age and ethnicity.	6/5/2020
6/04/2020	J-001B-HR-4	Grid N19, Data recovery area J-001B-003: single small fragment of human cranium on graded surface	6/9/2020
6/23/2020	J-001B-HR-5	Human ulna fragment found in Grid Q17 within 66-08-2303 (Mâgua Settlement Site)	7/2/2020
7/15/2020	J-001B-HR1-BR2 and BR3	Pit feature containing fragments of human bone representing at least two individuals.	7/20/2020
7/17/2020	J-001B-HR1-BR4	These remains are believed to represent a disturbed burial due to their proximity to Burials 1-3. This was designated as Burial 4.	7/28/2020
8/10/2020	J-001B-HR-6	Human femur fragment found in Grid AH21, located in Area E	8/17/2020
8/18/2020	J-001B-HR-7	Human cranium fragment found in Grid AF22, located in Area E	8/24/2020
8/21/2020	J-001B-HR-8	Human tooth found in Grid AE22, located in Area E	8/24/2020

9/29/2020	J-001B-HR-9	Femur fragment at Area E.	10/1/2020
12/29/20 Confirmed as HSR on 1/4/21	J-001B-HR-10	Single bone fragment on surface within ungulate fence corridor. Following notification, archeological investigation (underway as of 3/26/21) has discovered additional fragments in the area.	1/4/2021
2/04/2021	J-001B-HR-1	Additional human skeletal remains were discovered in a non-burial context while monitoring work for the Sabānan Fadang burial monument.	2/10/2021
4/13/2021	J-001B-HR-11	Midshaft long bone and smaller fragments; partial mandible with two intact molars at Area D. Additional burials were later found during the investigation at HR-11; all will be preserved in place.	4/16/2021
5/13/2021	J-001B-HR-12	Human cranial fragment at Area D	5/17/2021
	J-001B-HR-12- BR1	Primary burial context with only portions of the lower elements of the lower limbs remaining. The human remains appear to be from the same individual. The presence of one potential betel nut-stained tooth, Latte Period ceramics and lithics suggests CHamoru ancestry.	10/13/2021
5/17/2021	J-001B-HR-13	Approximately 20 small fragments of humerus at Area D	5/25/2021
5/20/2021	J-001B-HR-14	3 small human bone fragments, including an intermediate phalange at Area D	6/1/2021
5/26/2021	J-001B-HR-15	Medial femur fragment at Area D	6/1/2021
6/03/2021	J-001B-HR-16	Human cranial fragments at Area D	6/3/2021
6/11/2021	J-001B-HR-17	Human tibia midshaft fragment at Area D	6/22/2021
6/11/2021	J-001B-HR-18	Small human fibula mid-shaft fragment at Area D	6/22/2021
5/20/2021	J-001B-HR-19	Isolated fractured human incisor discovered during wet screening in the lab (post-excavation) at Area D	6/29/2021
5/27/2021	J-001B-HR-20	Very small indeterminate bone fragments, including less than 1cm distal phalanx discovered during wet screening in the lab (post-excavation) at Area D	6/29/2021
	J-001B-HR-20- BR1	Multiple remains, including an adult and sub-adult, within undulating limestone. The presence of potential betel nut-stained teeth, Latte Period ceramics and Tridacna shell, and absence of historic material suggests that the historically-disturbed burial dates to the Latte Period.	9/21/2021

6/02/2021	J-001B-HR-21	Isolated human molar at Area D	6/29/2021
	J-001B-HR-22-BR-1 and BR-2	Burial 1 (12/30/2021): three concentrations of human skeletal remains. Two concentrations were disturbed to the extent that they were not considered to represent in-situ burials. The third, although disturbed, represents a partially in-situ burial. Burial 2 (2/11/2022 SHPO): concentrations of human skeletal elements seemingly overlying intact elements in anatomical position, as well as elements in anatomical position which may also be somewhat displaced. There are at least 3 individuals observed.	BR-1: 1/3/2022 BR-2: 2/16/2022
7/06/2021	J-001B-HR-23	Approximately 50 or more various bone fragments	7/22/2021
8/19/2021	J-001B-HR-24	One (1) human tooth during wet screening of a data recovery unit	8/27/2021
8/24/2021	J-001B-HR-25	One (1) human clavicle during routine monitoring	9/7/2021
	J-001B-HR-25-BR-1	Portions of articulated cranial and thoracic vertebral elements, clavicles, and ribs with associated lower limbs appear to be from one (1) adult individual.	12/2/2021
9/04/2021	J-001B-HR-26	Two (2) HSR fragments, specifically proximal ends of a radius and ulna, due northwest of prior discovery Area 3	9/9/2021
MAMIZU J-755			
5/15/2020	J-755-HR-1	HSR fragments identified in Discovery Area J-755-006	5/21/2020
11/05/2020	J-755-HR-2	HSR consisting of scapula and femur fragments at CVOC area. Disturbed context	11/12/2020
1/06/2021	J-755-HR-3	Human bone fragments consisting of patellae, scapula, rib, phalange, and 20 small unidentified fragments	1/7/2021
1/13/2021	J-755-HR-4	Approximately 25 fragments of human skeletal remains discovered during data recovery investigations Discovery Area J-755-006 (Area 6)	1/20/2021
5/11/2021	J-755-HR-4-BR1	Remains consist of articulated leg bones, possibly representing more than one individual and additional fragmented bones that may be associated with the burial.	5/17/2021
3/15/2021	J-755-HR-5	Multiple fragments of human skeletal remains including metatarsal, cranial fragments, teeth and fragments of long bones	3/17/2021
8/18/2021	J-755-HR-6	Human cranial fragment discovered in Area 16 (southern perimeter fence corridor.	8/27/2021

8/24/2021	J-755-HR-7	Probable human femoral fragment discovered in southwestern perimeter fence corridor.	8/27/2021
8/26/2021	J-755-HR-8	Fragmentary human skeletal remains found in Discovery Area 17.	9/9/2021
10/15/2021	J-755-HR-9	Fragmentary human skeletal remains found in Discovery Area 17.	10/25/2021
1/21/2022	J-755-HR-10	Fragmentary long bone fragment believed to be human	1/28/2022
2/04/2022	J-755-HR-11	Two possible HSR fragments found in a push pile; one of the fragments was later determined to be non-human	2/4/2022
2/17/2022	J-755-HR-12	Human femur and other bones, probable burial outside construction APE	2/22/2022
2/28/2022	J-755-HR-13	Weathered bone scatter that included fragments of femur and tibia	3/3/2022
3/28/2022	J-755-HR-14	Weathered bone fragments including tibia fragment later determined to be non-human	3/30/2022
12/06/2022	J-755-HR-15	Probable femoral fragments and other bone fragments	12/9/2022
2/09/2023	J-755-HR-15 B1	Fragmented remains	2/22/2023
2/28/2023	J-755-HR-15 B2	Leg bones and other fragmented remains	3/2/2023
3/17/2023	J-755-HR-15 B3	Leg, pelvis, hand, and foot bones and other fragmented remains	3/22/2023
6/06/2023	J-755-HR-16	Fragmented arm bone and other fragmented remains	6/06/2023
*Post-Field discovery	J-755-HR-17	*Discovered during laboratory work: sub-adult cranial vault fragment collected from the ground surface during archeological monitoring at J-755-03	9/17/2024
*Post-Field discovery	J-755-HR-18	*Discovered during laboratory work: a cranial vault fragment collected during shovel testing at J-755-12.	9/17/2024
*Post-Field discovery	J-755-HR-19	*Discovered during laboratory work: both an unidentified HSR fragment collected on the ground surface of a test unit and a long bone shaft fragment collected from a test unit at J-755-05.	9/17/2024
*Post-Field discovery	J-755-HR-20	*Discovered during laboratory work: cranial vault fragment collected in a bulk soil sample from a feature at J-755-08	9/17/2024
*Post-Field discovery	J-755-HR-21	*Discovered during laboratory work	9/17/2024
MAMIZU J-006			
3/19/2019	J-006-HR-1	Human femur Fragment discovered in fill	3/19/2019
4/03/2019	J-006-HR-2	Human clavicle fragment discovered in fill	4/3/2019
4/16/2019	J-006-HR-3	Human long bone fragment discovered in fill	4/18/2019

5/09/2019	J-006-HR-4	Human radius fragment discovered in fill	5/10/2019
MILCON P-103			
10/07/2013	P-103-HR-1*	In-situ human remains were discovered in burial context during shovel testing, exposed in effort to determine age and ethnicity in consultation with SHPO, but not removed, preserved in place. Determined to be Latte Period adult.	10/08/2013
10/08/2013	P-103-HR-2*	Disarticulated human skeletal remains (tarsals) were encountered during shovel testing near HR-1, test was expanded in effort to determine if other bones were present but no other bones were found. Bones were reburied where found per consultation with SHPO.	10/9/2013
Oct 2013	P-103-HR-3*	Human skeletal remains (adult Latte Period individual of moderate stature) were discovered in burial context during shovel testing. Consultations with SHPO resulted in reburial without removal.	Oct 2013
Oct 2013	P-103-HR-4*	Fragmentary remains of adult Latte Period individual were discovered during shovel testing. Remains were buried in place per consultation with SHPO.	Oct 2013
*Note that the four discoveries listed above were discovered during planning surveys. Project P-103 was subsequently designed to avoid these locations and all eligible sites. They do not fall within the current project APE.			
1/25/2023	P-103-HR-1	Discovered by construction monitor, HR-1 consists of a single weathered bone fragment later determined to be non-human; SOP investigation did not produce additional bones.	1/25/2023
MILCON P-290			
12/23/2022	P-290-001 HR-1	2 cranial fragments discovered on the ground surface after clearing and grubbing and a lift occurred	12/27/2022
4/27/2023	P-290-001 HR-2	Cranial fragments discovered during survey of P-290-001	5/2/2023
6/28/2023	P-290-001 HR-3	1 cranial fragment discovered at bottom of a shovel test probe	6/30/2023
7/13/2023	P-290-001 HR-4	Skeletal fragments discovered on the ground surface of previously graded surface after typhoon Mawar rains	7/18/2023
11/16/2023	P-290-001 HR-5	1 human toe bone discovered on the ground surface after clearing and grubbing	11/21/2023

Construction began in late 2022. MCBCB is providing site checks per Stipulation VI.F of the 2011 Programmatic Agreement. Contracting monitoring began in September 2023 throughout the P-290 project area.

MILOCN P-735			
8/28/2021	P-735-HR-1	74 probable human skeletal remain fragments from a shovel test pit associated with archeological survey. Preliminary analysis identified some of the probable human remains to be from an ulna, cranial vault, and at least two from forearm mid-shafts within disturbed soils.	8/30/2021
MILCON P-187			
11/07/2023	P-187-HR-1	Probable human skeletal fragment discovered in a shovel testing during GHPI Site No. 66-08-2296 archeological testing	11/09/2023
END OF REPORT JULY 31, 2025			