



DEPARTMENT OF THE NAVY

COMMANDER FLEET ACTIVITIES
SASEBO, JAPAN
PSC 476 BOX 1
FPO AP 96322-0001

5090
Ser 00/0802
October 18, 2019

All Parents or Caregivers
Sasebo Child Development Center

Dear Parent or Caregiver:

SUBJECT: DRINKING WATER AT SASEBO CHILD DEVELOPMENT CENTER

The safety and wellness of children at our Child Development Centers (CDC), Schools and Youth Centers (YC) are my top priority. In my earlier letter announcing our lead in drinking water testing program, I informed you that we are testing all water outlets that could potentially be used for cooking, washing or drinking at our CDCs and YCs.

This week, we received the most recent results of water testing of Sasebo CDC drinking water outlets. Of the 36 outlets initially tested, two outlets continue to test higher than 15 Parts Per Billion (ppb) screening level for lead, which is a level designated by the Environmental Protection Agency (EPA) to take action with additional testing and corrective measures. Lead in drinking water may come from the existing plumbing inside buildings including fittings, solder, water coolers or water faucets. Lead is more likely to be found in drinking water when the water has not been run for an extended period of time and has been sitting in the system.

The lead levels were higher than the EPA-recommended screening level at an outside playground faucet by room 104 and at an outside playground faucet by room 105. After receiving the test results, we immediately took these water sources out of service. None of the hallway drinking fountains at the center exceeded the screening level. Details on the corrective actions we will take to reduce the amount of lead in water at these fixtures will be discussed in an Overview of Results and Actions to be provided upon completion. Enclosures (1) and (2) are Complete Test Results and a Floor Plan of the CDC that indicates the location of the fixtures that had lead levels higher than the EPA-recommended screening level.

Exceedances in the lead program are not indicative of a public health issue, but rather the sampling is a proactive measure for early identification of potential lead sources so that corrective action can be taken as necessary.

I know this issue may generate more questions than this letter can answer. As such, I invite you to attend the next Town Hall meeting which will be an opportunity for you to speak with medical and environmental representatives, have your questions answered and voice your concerns.

Testing results are also available on the Commander, Navy Installations Command (CNIC) Web site at:

https://www.cnic.navy.mil/regions/cnrj/installations/cfa_sasebo/om/public_works/.html

To learn more about lead in drinking water in schools and day care centers and additional water quality resources please visit:

- EPA (lead in drinking water in schools and day care centers):
<https://www.epa.gov/dwreginfo/drinking-water-schools-and-childcare-facilities>
- Drinking Water Taste, Odor, and Color:
<http://water.epa.gov/drink/contaminants/secondarystandards.cfm>
- CFAS Annual Drinking Water Consumer Confidence Report:
https://www.cnic.navy.mil/regions/cnrj/installations/cfa_sasebo/om/public_works/.html

If you have any concerns at all, please contact my Environmental Team, Ms. Elizabeth Barris (DSN: 315-252-3369 or e-mail: elizabeth.barris@fe.navy.mil) or Mr. Frederick S. Pianalto (DSN: 315-252-3263 or e-mail: frederick.pianalto@fe.navy.mil).

If you have any health related questions or concerns, I encourage you to contact your health care provide or if you are a TRICARE beneficiary, use the REGION Appointment Center to schedule an appointment with your primary care provider at Commercial: 1-866-645-4584.

Rest assured that my team and I will continue to monitor and test water quality at the Sasebo Child Development Center to ensure our drinking water lead levels are lower than the EPA-recommended screening levels. I am committed to the safety and health of all personnel and family members using our facilities and will keep you updated on this issue.

Sincerely,



B. L. STALLINGS
Captain, U.S. Navy
Commander,
Fleet Activities Sasebo

Enclosures: 1. Summary of Results
2. Sasebo Child Development Center Floor Plan

Copy to: CNIC N45
NAVFAC N45

Table 1. Summary of Results

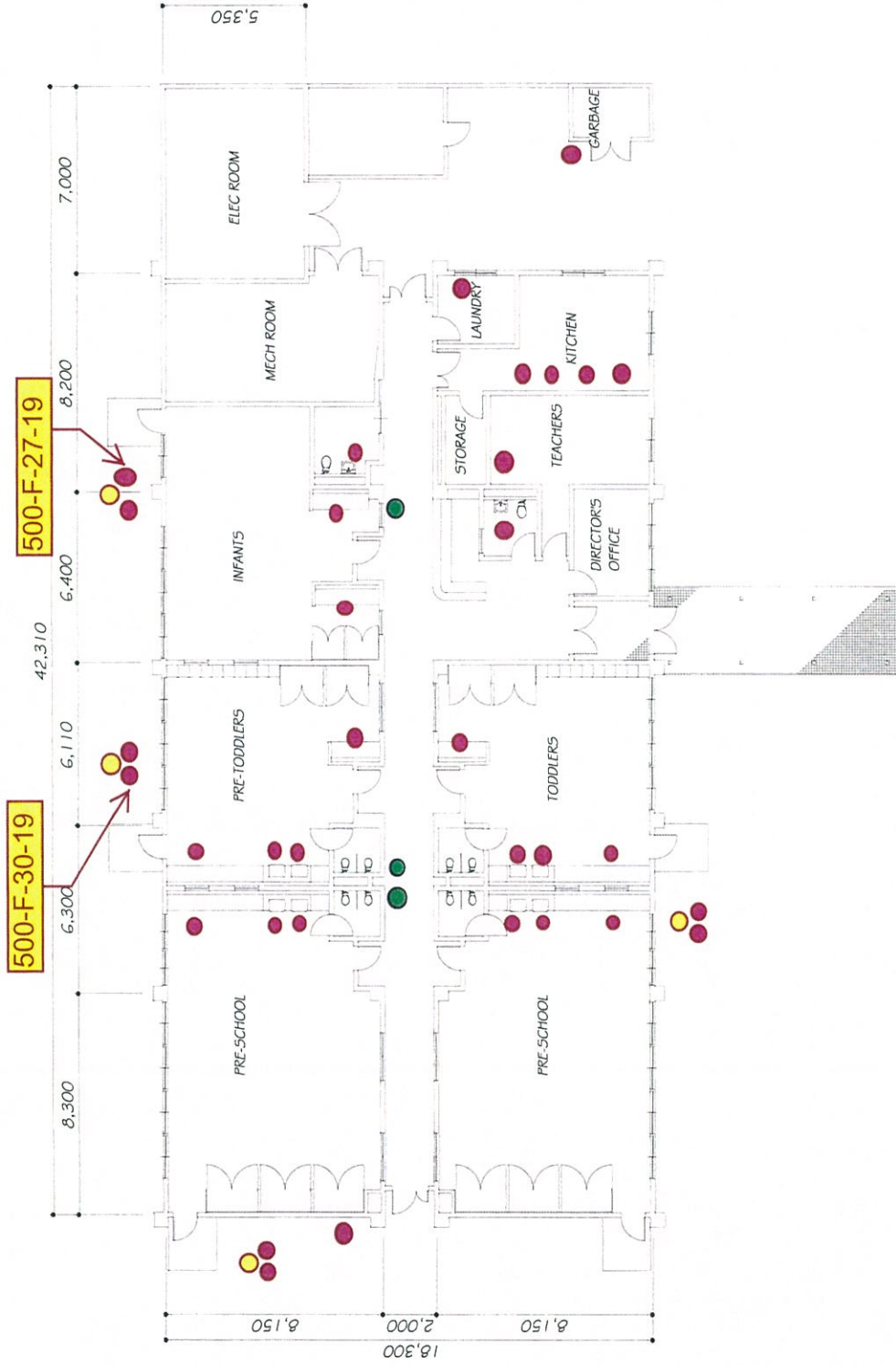
SAMPLING LOCATION DESCRIPTION		SAMPLING RESULTS		RE-SAMPLING RESULTS		CORRECTIVE ACTIONS		POST REMEDIATION SAMPLING RESULTS						
CATEGORY	Water Intended For:	SAMPLE ID	Room Number - Outlet Description	Comments	First Draw (ppb)	Retest required?	Date Fixture Secured? (See Note 1)	Water Fountain Flush Sample - Collected day before First Draw Sampling (ppb)	Follow up Flush - Collected 30 seconds after First Draw Sampling (ppb)	First Draw (ppb)	Description	Combined Costs	First Draw (ppb)	Follow up Flush - Collected 30 seconds after First Draw Sampling (ppb)
WASHING		500-F-2-19	113 TEACHER REST RM	FAUCET	6/20/2019	NO		N/A	9/14/2019					
WASHING		500-F-3-19	114 KITCHEN	FAUCET	8/28/2019	NO		N/A	10/17/2019					
WASHING		500-F-4-19	114 KITCHEN	FAUCET	11.0	NO		N/A	N/A					
WASHING		500-F-5-19	114 KITCHEN	FAUCET	3.6	NO		N/A	N/A					
WASHING		500-F-6-19	114 KITCHEN	FAUCET	1.4	NO		N/A	N/A					
WASHING		500-F-7-19	112 TOILET	FAUCET	6.2	NO		N/A	N/A					
WASHING		500-F-8-19	105 INFANTS RM	FAUCET	12.0	NO		N/A	N/A					
WASHING		500-F-9-19	105 INFANTS RM	FAUCET	1.9	NO		N/A	N/A					
WASHING		500-F-10-19	104 PRE-TODD RM	FAUCET	1.1	NO		N/A	N/A					
WASHING		500-F-11-19	104 PRE-TODD RM	FAUCET	2.1	NO		N/A	N/A					
WASHING		500-F-12-19	104 PRE-TODD RM	FAUCET	2.2	NO		N/A	N/A					
WASHING		500-F-13-19	104 PRE-TODD RM	FAUCET	1.1	NO		N/A	N/A					
WASHING		500-F-14-19	101 PRE-SCHOOL	FAUCET	1.6	NO		N/A	N/A					
WASHING		500-F-15-19	101 PRE-SCHOOL	FAUCET	2.4	NO		N/A	N/A					
WASHING		500-F-16A-19	101 PRE-SCHOOL	FAUCET	1.9	NO		N/A	N/A					
WASHING		500-F-17-19	102 PRE-SCHOOL	FAUCET	1.7	NO		N/A	N/A					
WASHING		500-F-18-19	102 PRE-SCHOOL	FAUCET	2.5	NO		N/A	N/A					
WASHING		500-F-19-19	103 TODD RM	FAUCET	1.4	NO		N/A	N/A					
WASHING		500-F-20-19	103 TODD RM	FAUCET	1.7	NO		N/A	N/A					
WASHING		500-F-21-19	103 TODD RM	FAUCET	3.3	NO		N/A	N/A					
WASHING		500-F-22-19	103 TODD RM	FAUCET	7.9	NO		N/A	N/A					
WASHING		500-F-23-19	103 TODD RM	FAUCET	3.3	NO		N/A	N/A					
WASHING		500-F-24-19	N/A OUTSIDE BY RM 103	FAUCET	8.1	NO		N/A	N/A					
WASHING		500-F-25-19	N/A OUTSIDE BY RM 103	FAUCET	5.3	NO		N/A	N/A					
DRINKING		500-B-26-19	N/A OUTSIDE BY RM 103	BUBBLER	3.9	NO		N/A	N/A					
WASHING		500-F-27-19	N/A OUTSIDE BY RM 114	FAUCET	26.0	YES	9/4/2019	N/A	21					
WASHING		500-F-28-19	N/A OUTSIDE BY RM 114	FAUCET	10.0	NO		N/A	N/A					
DRINKING		500-B-29-19	N/A OUTSIDE BY RM 114	BUBBLER	5.2	NO		N/A	N/A					
WASHING		500-F-30-19	N/A OUTSIDE BY RM 104	FAUCET	88.0	YES	9/4/2019	N/A	23					
WASHING		500-F-31-19	N/A OUTSIDE BY RM 104	FAUCET	16.0	YES	9/4/2019	N/A	5.4					
WASHING		500-F-33-19	N/A OUTSIDE BY RM 101	FAUCET	4.0	NO		N/A	N/A					
WASHING		500-F-34-19	N/A OUTSIDE BY RM 101	FAUCET	1.3	NO		N/A	N/A					
DRINKING		500-B-35-19	N/A OUTSIDE BY RM 101	BUBBLER	1.1	NO		N/A	N/A					
DRINKING		500-C-36-19	N/A HALLWAY BY 105	COOLER	2.0	NO		N/A	N/A					
DRINKING		500-C-37-19	N/A HALLWAY BY 104	COOLER	2.5	NO		N/A	N/A					
WASHING		500-F-40-19	N/A N/A	FAUCET	7.1	NO		N/A	N/A					

Notes:

¹ Affected outlets were immediately secured after receiving verbal communication from the lab on results exceeding the recommended level of 15 ppb. ² Post-remediation sampling was initially conducted on [ENTER DATE]. Additional [CORRECTIVE ACTIONS DESCRIPTION] were implemented and final results below recommended level of 15 ppb for sample collected on [ENTER DATE] are shown on the table.

Table 2. Summary Statistics

CATEGORY	INITIAL SAMPLING RESULTS		RE-SAMPLING RESULTS		POST REMEDIATION RESULTS	
	First Draw (ppb)	Recommended Level = 15 parts per billion (ppb)	First Draw (ppb)	Recommended Level = 15 parts per billion (ppb)	First Draw (ppb)	Recommended Level = 20ppb
Total Drinking	5	0	0	0	0	0
Total Drinking > 15 ppb	0	0	0	0	0	0
Total Cook/Brush	4	0	0	0	0	0
Total Cook/Brush > 15 ppb	0	0	0	0	0	0
Total Washing	27	3	3	2	3	0
Total Washing > 15 ppb	3	0	2	0	0	0
Total Samples	36	3	3	3	3	0
Total Samples > 15 ppb	3	0	2	0	0	0



FLOOR PLAN : BLDG.#500

- Fixtures that cleared
-
-

Yellow Boxes indicate location and ID number of fixtures requiring additional corrective actions

500-F-30-19

TITLE	PUBLIC WORKS DEPT. U.S. PLEACT SASEBO JAPAN		
SATISFACTORY	SKETCHED BY	SUPV	
APPROVED	CONTRACT NO.	SITT. NO.	PWD DWG NO.
	N62836		